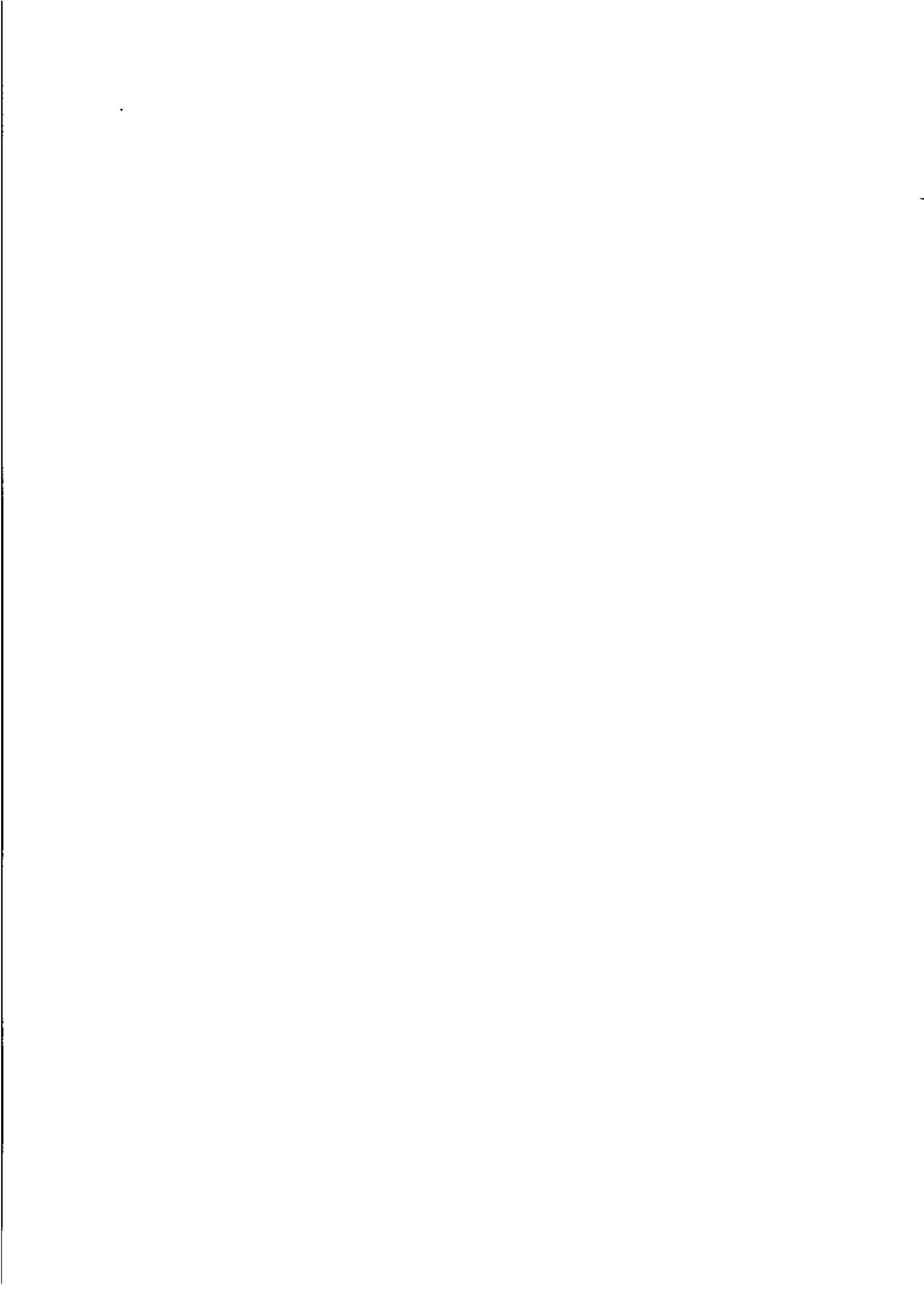




**November 1994**  
**The Labour Force**  
**Queensland**

**Catalogue No. 6201.3**

A decorative horizontal bar at the bottom of the page, consisting of two thick, black, horizontal bars that taper at their ends, mirroring the design of the top logo.



## THE LABOUR FORCE, QUEENSLAND, NOVEMBER 1994

### CONTENTS

Table	Page
.. Summary of Findings	2
<i>Diagram</i>	
1 Employed persons: Monthly percentage change, Australia and Queensland, November 1982 to November 1994	2
2 Unemployment rate, Australia and Queensland, November 1982 to November 1994	2
3 Unemployment rate: Regions of Queensland, November 1993 and November 1994	3
4 Labour force status: Trend series, Queensland, November 1982 to November 1994	7
5 Unemployment rate by age, Queensland, November 1982 to November 1994	11
<i>Table</i>	
1 Labour force, seasonally adjusted series, Queensland, November 1993 to November 1994	2
2 Employment and unemployment change for selected groups, Queensland, November 1993 and November 1994	3
Labour force status of the civilian population aged 15 years and over, Queensland	
3 Original series, September 1993 to November 1994	4
4 Seasonally adjusted series, September 1993 to November 1994	5
5 Trend series, September 1993 to November 1994	6
6 Statistical regions, September 1994	8
7 Statistical regions, October 1994	9
8 Statistical regions, November 1994	10
9 Age by major statistical region, November 1994	11
10 Persons aged 15 to 19 years by full-time attendance at an educational institution, November 1994	12
11 Persons aged 20 to 24 years by full-time attendance at a tertiary institution, November 1994	12
Employed persons, Queensland	
12 Full-time or part-time status, September 1993 to November 1994	13
13 Average hours worked by status in employment, industry (ANZSIC) and occupation, November 1994	14
14 Status in employment, industry (ANZSIC) and occupation, November 1994	15
15 Industry (ANZSIC) by occupation, November 1994	15
Unemployed persons, Queensland	
16 Duration of unemployment, Brisbane Major Statistical Region, September 1993 to November 1994	16
17 Duration of unemployment, Balance of Queensland, September 1993 to November 1994	17
18 Duration of unemployment, Queensland, September 1993 to November 1994	18
19 Unemployed persons and unemployment rates: Industry (ANZSIC) and occupation of last full-time job, Queensland, November 1993 to November 1994	19
.. Special surveys data relating to the labour force	20
.. Maps showing statistical regions of Queensland and Brisbane Major Statistical Region	22
.. Explanatory Notes	25
.. Technical Notes	28
.. Glossary	31

### NOTES

From August 1994, the industrial classification used in the Labour Force Survey is the Australian and New Zealand Standard Industrial Classification (ANZSIC) which has replaced the Australian Standard Industrial Classification (ASIC) (see p. 31).

In August 1994, the classification Status in Employment replaced Status of Worker, (see p. 32).

There have been several changes made to regional data published. For information regarding the availability of regional data contact Information Inquiries (07) 222 6351.

313 Adelaide Street  
BRISBANE Q 4000  
17 January 1995

R. A. Crockett  
DEPUTY COMMONWEALTH STATISTICIAN

© Commonwealth of Australia 1995

#### INQUIRIES

- for further information about statistics in this publication and the availability of related unpublished statistics, contact Information Inquiries on Brisbane (07) 222 6351 (fax (07) 229 6042) or any ABS State office.
- for information about other ABS statistics and services, telephone, fax or write to Information Inquiries, Australian Bureau of Statistics (ABS), GPO Box 9817, Brisbane Q 4001.

## SUMMARY OF FINDINGS

## SEASONALLY ADJUSTED SERIES

In seasonally adjusted terms, employment in Queensland increased by 88,000 from November 1993 to November 1994 while the number of unemployed persons decreased by 23,300 to 147,400 over the same period. Over the year to November 1994, the unemployment rate fell from 11.0 per cent to 9.1 per cent while the participation rate increased from 63.8 per cent to 64.6 per cent.

For Australia, in seasonally adjusted terms, employment increased by 258,000 and the number of unemployed persons decreased by 136,900 from November 1993 to November 1994. Over the same period, the participation rate increased by 1 percentage point to 63.2 per cent and the unemployment rate fell from 11.0 per cent to 9.3 per cent.

TABLE 1 — LABOUR FORCE, QUEENSLAND  
(Seasonally adjusted series)

Particulars	Unit	November 1993	August 1994	September 1994	October 1994	November 1994	Annual percentage change
Employed	'000	1,379.2	1,440.5	1,450.8	1,455.0	1,467.2	+ 6.4
Unemployed	'000	170.7	144.5	148.5	143.4	147.4	- 13.6
Unemployment rate	%	11.0	9.1	9.3	9.0	9.1	..
Participation rate	%	63.8	63.9	64.3	64.1	64.6	..
Labour force	'000	1,549.9	1,585.0	1,599.3	1,598.4	1,614.7	+ 4.2

## TREND SERIES

In Queensland, employment increased by 74,600 to 1,461,000 from November 1993 to November 1994 while the number of unemployed persons fell by 18,700 to 146,300 over the same period. In Australia, employment increased by 264,200 from November 1993 to November 1994 while the number of unemployed persons decreased by 130,700 over the same period.

DIAGRAM 1 - EMPLOYED PERSONS: MONTHLY PERCENTAGE CHANGE  
(Trend series)

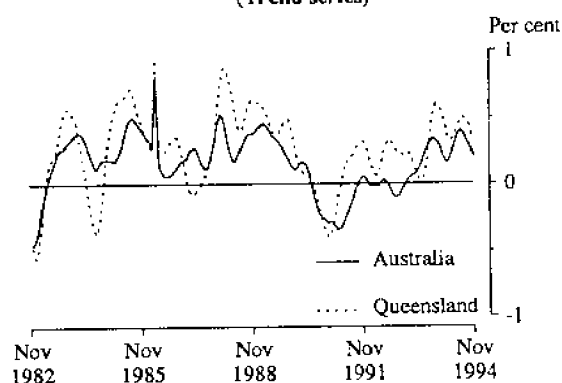
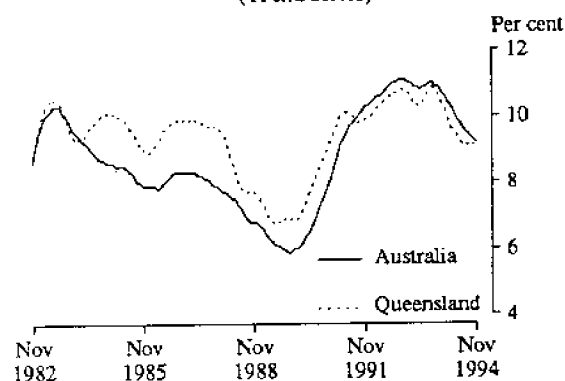


DIAGRAM 2 - UNEMPLOYMENT RATE  
(Trend series)



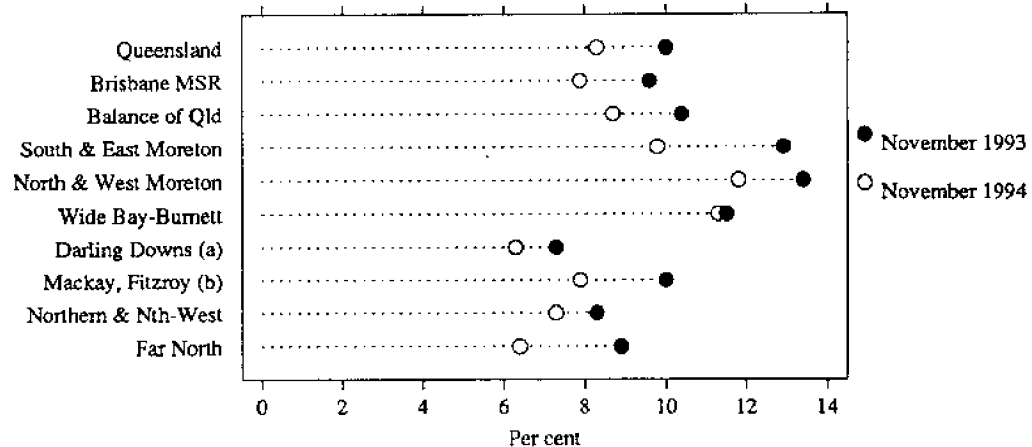
## ORIGINAL SERIES

In original terms, the number of employed persons in Queensland increased by 88,000 (6.4 per cent) from November 1993 to November 1994, the result of strong growth in both full-time and part-time employment of females and strong growth in full-time employment of males. Over the same period, the number of unemployed persons in Queensland decreased by 21,000, the result of a fall in the numbers of unemployed males and females looking for full-time work. The median duration of unemployment was 26 weeks in both November 1993 and November 1994.

## Regional estimates

The unemployment rate for the Brisbane Major Statistical Region (MSR) in November 1994 was 7.9 per cent and for the Balance of Queensland 8.7 per cent. Brisbane City Inner Ring had the highest unemployment rate in the Brisbane MSR at 9.9 per cent while the Brisbane City Outer Ring had the lowest rate with 6.1 per cent.

For the Balance of Queensland the region with the highest unemployment rate was North and West Moreton with 11.8 per cent. Wide Bay-Burnett recorded a rate of 11.3 per cent followed by South and East Moreton with 9.8 per cent. The Darling Downs and South-West Statistical Region had the lowest unemployment rate in the State, with 6.3 per cent.

SUMMARY OF FINDINGS — *continued*DIAGRAM 3 - UNEMPLOYMENT RATE: REGIONS OF QUEENSLAND  
NOVEMBER 1993 AND NOVEMBER 1994

(a) Including South-West. (b) Including Central-West.

**Youth estimates**

The number of 15 to 19 year olds in the Queensland labour force increased by 3,600 to 143,200 persons over the year from November 1993 to November 1994, while the number employed increased by 6,200 to 117,500 persons. The unemployment rate for this group decreased from 20.2 per cent in November 1993 to 17.9 per cent in November 1994 and the participation rate rose from 58.1 per cent in November 1993 to 59.5 per cent in November 1994.

There were 192,800 employed 20 to 24 year olds in November 1994, an increase of 12,300 (6.8 per cent) over the previous 12 months. The participation rate of this age group increased from 80.6 per cent in November 1993 to 81.9 per cent in November 1994 and the unemployment rate decreased from 13.5 per cent to 11.2 per cent over the same period.

TABLE 2 — EMPLOYMENT AND UNEMPLOYMENT CHANGE FOR SELECTED GROUPS, QUEENSLAND

Particulars	Employed ('000)		Annual percentage change	Unemployed ('000)		Annual percentage change
	November 1993	November 1994		November 1993	November 1994	
Males	804.4	840.6	+ 4.5	87.5	77.0	- 12.0
Females	579.1	630.9	+ 8.9	67.0	56.6	- 15.5
Persons aged (years)						
15 - 19	111.3	117.5	+ 5.6	28.2	25.7	- 8.9
20 - 24	180.5	192.8	+ 6.8	28.2	24.4	- 13.5
25 - 44	697.7	730.6	+ 4.7	68.9	57.9	- 16.0
45 and over	394.1	430.6	+ 9.3	29.1	25.6	- 12.0
Full-time workers	1,057.6	1,114.4	+ 5.4	..	..	..
Part-time workers	326.0	357.0	+ 9.5	..	..	..
Looking for full-time work	..	..	..	130.2	105.8	- 18.7
Looking for part-time work	..	..	..	24.3	27.7	+ 14.0
<b>Queensland</b>	<b>1,383.5</b>	<b>1,471.5</b>	<b>+ 6.4</b>	<b>154.5</b>	<b>133.5</b>	<b>- 13.6</b>

TABLE 3 — LABOUR FORCE STATUS: ORIGINAL SERIES, QUEENSLAND

Month	Employed		Unemployed		Labour force	Not in labour force	Civilian population aged 15 years and over	Unemployment rate	Participation rate
	Full-time	Total	Looking for full-time work	Total					
	'000	'000	'000	'000					
MALES									
1993 —									
September	715.7	800.6	88.3	99.1	899.7	297.2	1,196.9	11.0	75.2
October	723.6	809.9	75.9	85.1	895.0	304.6	1,199.6	9.5	74.6
November	725.8	804.4	78.7	87.5	891.9	310.5	1,202.3	9.8	74.2
December	733.9	815.3	82.7	92.4	907.7	297.4	1,205.1	10.2	75.3
1994 —									
January	722.8	813.4	93.2	101.6	915.1	293.0	1,208.1	11.1	75.7
February	719.8	809.5	90.0	99.9	909.4	301.6	1,211.1	11.0	75.1
March	721.8	811.8	83.1	96.6	908.5	305.6	1,214.1	10.6	74.8
April	723.2	811.2	83.7	94.0	905.2	311.7	1,217.0	10.4	74.4
May	734.3	824.2	75.6	84.9	909.1	310.8	1,219.8	9.3	74.5
June	744.9	831.2	73.4	82.2	913.3	309.4	1,222.7	9.0	74.7
July	746.8	833.8	70.0	79.7	913.6	312.2	1,225.7	8.7	74.5
August	749.3	831.6	70.8	77.4	909.0	319.8	1,228.8	8.5	74.0
September	758.7	843.6	69.6	78.1	921.7	310.1	1,231.8	8.5	74.8
October	757.0	845.6	65.9	73.9	919.4	315.4	1,234.9	8.0	74.5
November	756.1	840.6	69.4	77.0	917.5	320.4	1,237.9	8.4	74.1
FEMALES									
1993 —									
September	327.7	585.2	45.9	62.7	647.9	574.8	1,222.7	9.7	53.0
October	331.7	582.6	41.3	60.0	642.6	582.8	1,225.4	9.3	52.4
November	331.7	579.1	51.5	67.0	646.1	581.9	1,228.0	10.4	52.6
December	355.2	602.3	47.7	66.3	668.5	562.2	1,230.7	9.9	54.3
1994 —									
January	349.6	574.0	47.6	66.9	641.0	592.5	1,233.5	10.4	52.0
February	342.0	586.4	49.5	72.7	659.1	577.1	1,236.2	11.0	53.3
March	345.1	596.5	47.0	70.5	667.0	571.9	1,238.9	10.6	53.8
April	339.0	592.3	44.4	64.8	657.1	584.6	1,241.7	9.9	52.9
May	343.6	599.0	41.9	62.1	661.1	583.4	1,244.5	9.4	53.1
June	353.2	600.1	42.0	61.3	661.4	585.9	1,247.3	9.3	53.0
July	349.8	601.9	42.3	59.9	661.8	588.3	1,250.1	9.1	52.9
August	349.8	602.1	39.5	58.1	660.2	592.9	1,253.1	8.8	52.7
September	357.2	627.1	42.3	62.0	689.1	566.9	1,256.0	9.0	54.9
October	359.4	621.1	34.8	53.4	674.5	584.4	1,258.9	7.9	53.6
November	358.3	630.9	36.4	56.6	687.5	574.4	1,261.8	8.2	54.5
PERSONS									
1993 —									
September	1,043.4	1,385.8	134.2	161.8	1,547.6	872.0	2,419.6	10.5	64.0
October	1,055.4	1,392.5	117.2	145.1	1,537.6	887.4	2,425.0	9.4	63.4
November	1,057.6	1,383.5	130.2	154.5	1,538.0	892.4	2,430.4	10.0	63.3
December	1,089.2	1,417.5	130.4	158.7	1,576.2	859.6	2,435.8	10.1	64.7
1994 —									
January	1,072.4	1,387.4	140.7	168.6	1,556.0	885.5	2,441.5	10.8	63.7
February	1,061.9	1,396.0	139.5	172.6	1,568.6	878.7	2,447.3	11.0	64.1
March	1,066.9	1,408.3	130.1	167.2	1,575.5	877.5	2,453.0	10.6	64.2
April	1,062.2	1,403.5	128.1	158.8	1,562.3	896.4	2,458.7	10.2	63.5
May	1,077.9	1,423.2	117.5	147.0	1,570.2	894.1	2,464.3	9.4	63.7
June	1,098.1	1,431.2	115.3	143.5	1,574.7	895.2	2,470.0	9.1	63.8
July	1,096.6	1,435.7	112.3	139.7	1,575.4	900.5	2,475.9	8.9	63.6
August	1,099.0	1,433.7	110.3	135.5	1,569.2	912.6	2,481.8	8.6	63.2
September	1,115.9	1,470.7	111.9	140.1	1,610.8	876.9	2,487.8	8.7	64.8
October	1,116.4	1,466.7	100.6	127.3	1,594.0	899.8	2,493.8	8.0	63.9
November	1,114.4	1,471.5	105.8	133.5	1,605.0	894.8	2,499.8	8.3	64.2

TABLE 4 — LABOUR FORCE STATUS: SEASONALLY ADJUSTED SERIES, QUEENSLAND

Month	Employed	Unemployed	Labour force	Unemployment rate	Participation rate
	'000	'000	'000	%	%
MALES					
1993 —					
September	791.4	108.1	899.6	12.0	75.2
October	802.0	96.5	898.5	10.7	74.9
November	803.5	96.3	899.8	10.7	74.8
December	802.4	92.3	894.7	10.3	74.2
1994 —					
January	820.0	91.7	911.7	10.1	75.5
February	815.1	93.6	908.7	10.3	75.0
March	813.6	90.7	904.3	10.0	74.5
April	817.1	87.6	904.7	9.7	74.3
May	834.3	79.7	914.0	8.7	74.9
June	831.5	81.8	913.3	9.0	74.7
July	832.3	81.3	913.7	8.9	74.5
August	835.1	83.1	918.1	9.0	74.7
September	833.8	85.3	919.1	9.3	74.6
October	837.2	83.9	921.1	9.1	74.6
November	839.7	84.7	924.4	9.2	74.7
FEMALES					
1993 —					
September	575.8	63.8	639.6	10.0	52.3
October	579.7	66.8	646.5	10.3	52.8
November	575.7	74.4	650.1	11.4	52.9
December	596.0	63.8	659.8	9.7	53.6
1994 —					
January	590.0	66.4	656.3	10.1	53.2
February	594.8	62.1	656.9	9.5	53.1
March	597.4	63.4	660.8	9.6	53.3
April	590.1	62.5	652.5	9.6	52.6
May	595.7	64.3	660.0	9.7	53.0
June	597.5	63.9	661.3	9.7	53.0
July	603.8	61.0	664.8	9.2	53.2
August	605.4	61.4	666.8	9.2	53.2
September	617.0	63.2	680.3	9.3	54.2
October	617.8	59.5	677.3	8.8	53.8
November	627.5	62.7	690.2	9.1	54.7
PERSONS					
1993 —					
September	1,367.2	172.0	1,539.2	11.2	63.6
October	1,381.7	163.3	1,545.0	10.6	63.7
November	1,379.2	170.7	1,549.9	11.0	63.8
December	1,398.4	156.1	1,554.6	10.0	63.8
1994 —					
January	1,410.0	158.1	1,568.0	10.1	64.2
February	1,409.8	155.8	1,565.6	9.9	64.0
March	1,410.9	154.2	1,565.1	9.8	63.8
April	1,407.2	150.0	1,557.2	9.6	63.3
May	1,430.0	144.0	1,574.0	9.1	63.9
June	1,429.0	145.7	1,574.7	9.3	63.8
July	1,436.2	142.3	1,578.5	9.0	63.8
August	1,440.5	144.5	1,585.0	9.1	63.9
September	1,450.8	148.5	1,599.3	9.3	64.3
October	1,455.0	143.4	1,598.4	9.0	64.1
November	1,467.2	147.4	1,614.7	9.1	64.6

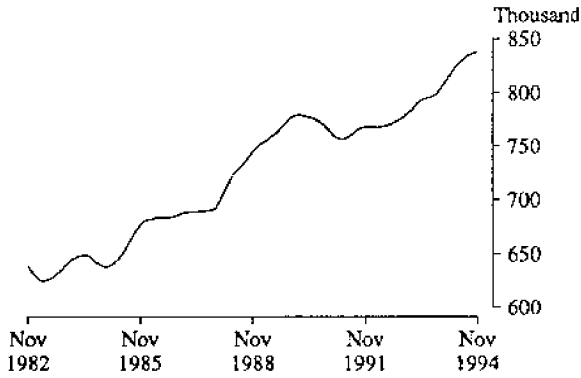
TABLE 5 — LABOUR FORCE STATUS: TREND SERIES, QUEENSLAND

Month	Employed	Unemployed	Labour force	Unemployment rate	Participation rate
	'000	'000	'000	%	%
MALES					
1993 —					
September	797.4	99.3	896.8	11.1	74.9
October	799.9	98.6	898.4	11.0	74.9
November	803.1	97.2	900.3	10.8	74.9
December	806.9	95.3	902.2	10.6	74.9
1994 —					
January	811.0	93.0	904.0	10.3	74.8
February	815.0	90.8	905.7	10.0	74.8
March	818.9	88.5	907.4	9.8	74.7
April	822.9	86.2	909.1	9.5	74.7
May	826.8	84.0	910.7	9.2	74.7
June	830.1	82.6	912.6	9.0	74.6
July	832.8	82.2	915.0	9.0	74.6
August	834.7	82.7	917.4	9.0	74.7
September	836.0	83.4	919.5	9.1	74.6
October	837.2	84.1	921.4	9.1	74.6
November	837.7	84.9	922.7	9.2	74.5
FEMALES					
1993 —					
September	573.6	67.7	641.3	10.6	52.4
October	578.3	68.3	646.6	10.6	52.8
November	583.3	67.8	651.1	10.4	53.0
December	587.8	66.8	654.6	10.2	53.2
1994 —					
January	591.2	65.5	656.7	10.0	53.2
February	593.2	64.4	657.6	9.8	53.2
March	594.1	63.5	657.7	9.7	53.1
April	594.8	63.0	657.8	9.6	53.0
May	596.0	62.8	658.9	9.5	52.9
June	598.8	62.7	661.5	9.5	53.0
July	603.2	62.4	665.5	9.4	53.2
August	608.4	62.0	670.4	9.2	53.5
September	613.9	61.7	675.6	9.1	53.8
October	619.0	61.5	680.5	9.0	54.1
November	623.3	61.3	684.6	9.0	54.3
PERSONS					
1993 —					
September	1,371.0	167.0	1,538.1	10.9	63.6
October	1,378.1	166.9	1,545.0	10.8	63.7
November	1,386.4	165.0	1,551.4	10.6	63.8
December	1,394.7	162.0	1,556.8	10.4	63.9
1994 —					
January	1,402.2	158.6	1,560.8	10.2	63.9
February	1,408.2	155.2	1,563.4	9.9	63.9
March	1,413.0	152.0	1,565.0	9.7	63.8
April	1,417.7	149.2	1,566.9	9.5	63.7
May	1,422.8	146.8	1,569.6	9.4	63.7
June	1,428.8	145.3	1,574.1	9.2	63.7
July	1,435.9	144.6	1,580.5	9.1	63.8
August	1,443.1	144.7	1,587.8	9.1	64.0
September	1,449.9	145.1	1,595.0	9.1	64.1
October	1,456.3	145.6	1,601.9	9.1	64.2
November	1,461.0	146.3	1,607.2	9.1	64.3

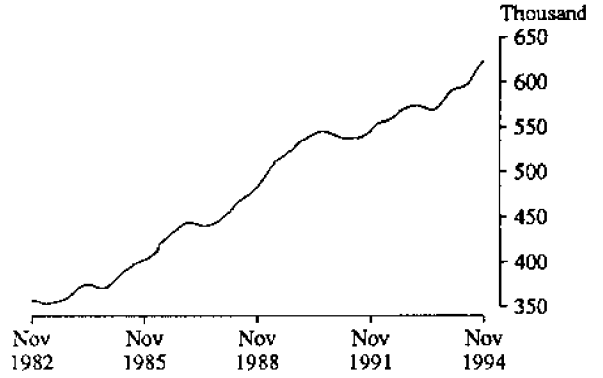


DIAGRAM 4 - LABOUR FORCE STATUS: TREND SERIES, QUEENSLAND, NOVEMBER 1982 TO NOVEMBER 1994

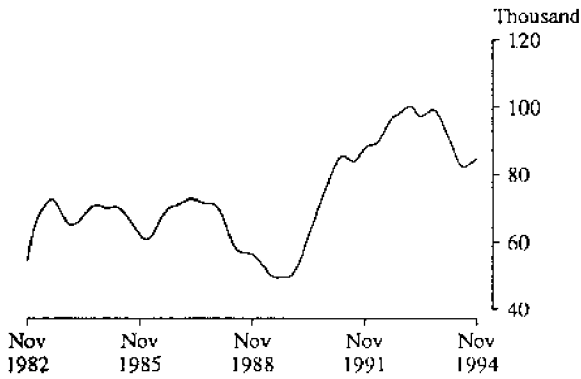
EMPLOYED MALES



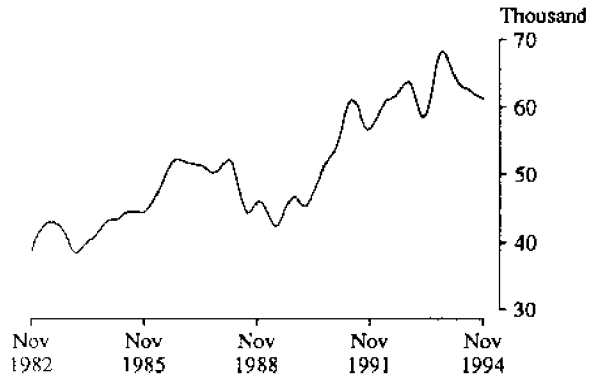
EMPLOYED FEMALES



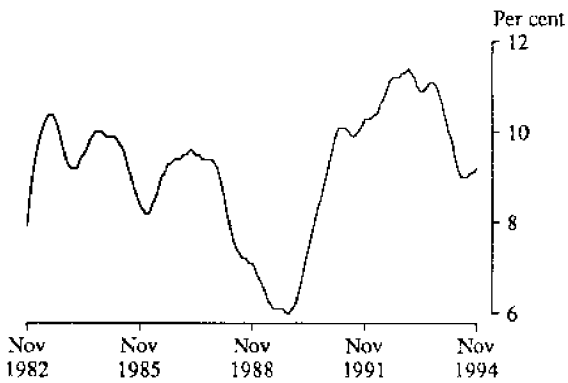
UNEMPLOYED MALES



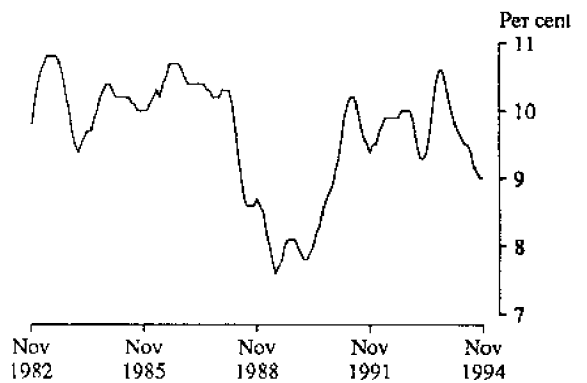
UNEMPLOYED FEMALES



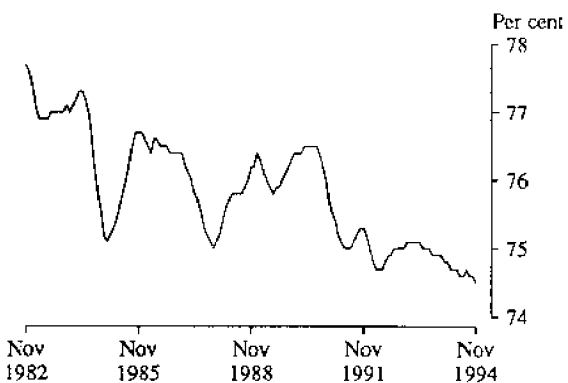
MALE UNEMPLOYMENT RATE



FEMALE UNEMPLOYMENT RATE



MALE PARTICIPATION RATE



FEMALE PARTICIPATION RATE

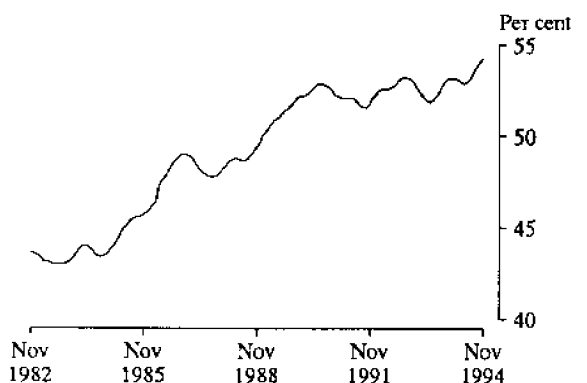


TABLE 6 — LABOUR FORCE STATUS: STATISTICAL REGIONS, QUEENSLAND, SEPTEMBER 1994

Region	Employed			Unemployed	Labour force	Unemployment rate	Participation rate
	Full-time	Part-time	Total				
	'000	'000	'000				
<b>MALES</b>							
<i>Brisbane</i>	346.4	43.7	390.1	33.8	423.9	8.0	75.2
Brisbane City Inner Ring	81.3	14.9	96.2	8.7	104.9	8.3	70.6
Brisbane City Outer Ring	104.6	10.8	115.4	6.8	122.2	5.5	73.0
South and East BSD Balance	60.0	6.3	66.3	5.9	72.2	8.2	81.9
North and West BSD Balance	100.6	11.6	112.2	12.4	124.6	9.9	78.3
<i>Balance of Queensland</i>	412.3	41.2	453.5	44.3	497.8	8.9	74.5
South and East Moreton	74.5	8.8	83.2	9.2	92.4	9.9	75.0
North and West Moreton	55.2	8.8	64.0	8.0	72.0	11.1	71.2
Wide Bay-Burnett	44.0	4.2	48.2	8.6	56.8	15.2	70.6
Darling Downs and South-West	62.9	6.0	68.8	3.6	72.5	5.0	78.6
Mackay, Fitzroy and Central-West	66.8	4.9	71.7	6.8	78.4	8.6	70.0
Northern and North-West	47.5	4.1	51.6	4.1	55.7	7.4	75.1
Far North	61.4	4.6	65.9	4.0	70.0	5.8	82.2
<b>Queensland</b>	<b>758.7</b>	<b>84.9</b>	<b>843.6</b>	<b>78.1</b>	<b>921.7</b>	<b>8.5</b>	<b>74.8</b>
<b>FEMALES</b>							
<i>Brisbane</i>	174.4	128.8	303.2	25.3	328.5	7.7	55.9
Brisbane City Inner Ring	55.2	27.5	82.7	8.3	91.0	9.1	57.4
Brisbane City Outer Ring	49.7	42.3	92.0	5.9	97.9	6.0	53.0
South and East BSD Balance	25.5	23.2	48.7	4.3	53.0	8.2	59.5
North and West BSD Balance	44.0	35.8	79.8	6.8	86.6	7.8	55.6
<i>Balance of Queensland</i>	182.8	141.1	323.9	36.7	360.6	10.2	54.0
South and East Moreton	37.5	25.4	62.9	8.7	71.7	12.2	57.1
North and West Moreton	25.8	19.2	44.9	4.4	49.3	8.8	52.2
Wide Bay-Burnett	19.6	15.0	34.6	6.3	40.9	15.3	49.0
Darling Downs and South-West	26.5	24.8	51.2	4.3	55.5	7.8	57.3
Mackay, Fitzroy and Central-West	25.9	22.2	48.2	5.1	53.2	9.5	47.5
Northern and North-West	20.6	14.1	34.7	3.9	38.6	10.1	53.0
Far North	27.0	20.3	47.3	4.1	51.4	8.0	62.4
<b>Queensland</b>	<b>357.2</b>	<b>269.9</b>	<b>627.1</b>	<b>62.0</b>	<b>689.1</b>	<b>9.0</b>	<b>54.9</b>
<b>PERSONS</b>							
<i>Brisbane</i>	520.8	172.5	693.3	59.1	752.4	7.8	65.3
Brisbane City Inner Ring	136.5	42.4	179.0	17.0	195.9	8.7	63.8
Brisbane City Outer Ring	154.3	53.1	207.4	12.6	220.0	5.7	62.5
South and East BSD Balance	85.5	29.5	115.0	10.3	125.3	8.2	70.7
North and West BSD Balance	144.5	47.5	192.0	19.2	211.2	9.1	67.0
<i>Balance of Queensland</i>	595.1	182.3	777.4	81.0	858.5	9.4	64.2
South and East Moreton	112.0	34.2	146.1	17.9	164.0	10.9	66.0
North and West Moreton	81.0	28.0	109.0	12.4	121.3	10.2	62.0
Wide Bay-Burnett	63.6	19.2	82.8	14.9	97.7	15.2	59.6
Darling Downs and South-West	89.3	30.7	120.1	8.0	128.0	6.2	67.7
Mackay, Fitzroy and Central-West	92.8	27.1	119.9	11.8	131.7	9.0	58.7
Northern and North-West	68.1	18.2	86.3	8.0	94.3	8.5	64.2
Far North	88.4	24.9	113.3	8.1	121.4	6.7	72.5
<b>Queensland</b>	<b>1,115.9</b>	<b>354.8</b>	<b>1,470.7</b>	<b>140.1</b>	<b>1,610.8</b>	<b>8.7</b>	<b>64.8</b>

TABLE 7 — LABOUR FORCE STATUS: STATISTICAL REGIONS, QUEENSLAND, OCTOBER 1994

Region	Employed			Unemployed '000	Labour force '000	Unem- ployment rate %	Partici- pation rate %
	Full-time '000	Part-time '000	Total '000				
<b>MALES</b>							
<i>Brisbane</i>	352.0	43.9	395.9	29.3	425.2	6.9	75.3
Brisbane City Inner Ring	86.0	14.3	100.3	10.4	110.8	9.4	72.1
Brisbane City Outer Ring	107.9	12.3	120.3	7.3	127.6	5.7	73.5
South and East BSD Balance	59.2	6.2	65.4	3.8	69.2	5.4	80.8
North and West BSD Balance	98.8	11.1	109.9	7.8	117.7	6.6	77.4
<i>Balance of Queensland</i>	405.0	44.7	449.6	44.6	494.2	9.0	73.7
South and East Moreton	73.1	9.7	82.8	9.7	92.5	10.5	74.3
North and West Moreton	53.3	9.8	63.0	8.0	71.1	11.3	70.0
Wide Bay-Burnett	43.8	4.2	48.0	8.6	56.6	15.1	72.2
Darling Downs and South-West	61.4	5.9	67.3	4.8	72.1	6.7	75.0
Mackay, Fitzroy and Central-West	68.1	4.4	72.5	6.3	78.8	8.0	70.0
Northern and North-West	49.4	4.4	53.8	3.3	57.1	5.8	75.0
Far North	55.9	6.3	62.1	3.9	66.0	5.8	81.6
<b>Queensland</b>	<b>757.0</b>	<b>88.6</b>	<b>845.6</b>	<b>73.9</b>	<b>919.4</b>	<b>8.0</b>	<b>74.5</b>
<b>FEMALES</b>							
<i>Brisbane</i>	174.8	125.3	300.1	25.9	326.0	7.9	55.3
Brisbane City Inner Ring	54.7	28.5	83.2	7.0	90.2	7.8	56.5
Brisbane City Outer Ring	50.6	40.7	91.2	7.1	98.3	7.2	52.7
South and East BSD Balance	26.3	20.0	46.3	5.1	51.4	9.9	58.7
North and West BSD Balance	43.3	36.1	79.4	6.8	86.1	7.8	55.4
<i>Balance of Queensland</i>	184.6	136.4	321.0	27.5	348.5	7.9	52.0
South and East Moreton	37.2	27.8	64.9	7.2	72.2	10.0	54.9
North and West Moreton	25.1	19.3	44.4	4.0	48.4	8.2	50.7
Wide Bay-Burnett	19.3	15.4	34.7	3.1	37.8	8.1	47.6
Darling Downs and South-West	24.6	24.6	49.2	* 2.4	51.6	* 4.7	53.2
Mackay, Fitzroy and Central-West	27.5	19.8	47.2	4.5	51.8	8.8	46.1
Northern and North-West	22.3	13.3	35.6	* 1.9	37.6	* 5.1	50.8
Far North	28.7	16.2	44.9	4.3	49.2	8.8	61.5
<b>Queensland</b>	<b>359.4</b>	<b>261.7</b>	<b>621.1</b>	<b>53.4</b>	<b>674.5</b>	<b>7.9</b>	<b>53.6</b>
<b>PERSONS</b>							
<i>Brisbane</i>	526.8	169.2	696.1	55.2	751.3	7.3	65.1
Brisbane City Inner Ring	140.7	42.8	183.6	17.4	201.0	8.7	64.1
Brisbane City Outer Ring	158.5	53.0	211.5	14.4	225.9	6.4	62.8
South and East BSD Balance	85.5	26.2	111.7	8.8	120.6	7.3	69.6
North and West BSD Balance	142.1	47.2	189.3	14.5	203.8	7.1	66.3
<i>Balance of Queensland</i>	589.6	181.1	770.6	72.1	842.7	8.6	62.9
South and East Moreton	110.3	37.5	147.8	16.9	164.7	10.3	64.3
North and West Moreton	78.4	29.1	107.4	12.0	119.5	10.1	60.7
Wide Bay-Burnett	63.1	19.7	82.7	11.6	94.4	12.3	59.8
Darling Downs and South-West	85.9	30.5	116.4	7.3	123.7	5.9	64.1
Mackay, Fitzroy and Central-West	95.6	24.1	119.7	10.8	130.6	8.3	58.0
Northern and North-West	71.7	17.7	89.5	5.2	94.7	5.5	63.0
Far North	84.6	22.4	107.0	8.2	115.2	7.1	71.6
<b>Queensland</b>	<b>1,116.4</b>	<b>350.3</b>	<b>1,466.7</b>	<b>127.3</b>	<b>1,594.0</b>	<b>8.0</b>	<b>63.9</b>

TABLE 8 — LABOUR FORCE STATUS: STATISTICAL REGIONS, QUEENSLAND, NOVEMBER 1994

Region	Employed			Unemployed '000	Labour force '000	Unem- ployment rate %	Partici- pation rate %
	Full-time	Part-time	Total				
	'000	'000	'000				
<b>MALES</b>							
<i>Brisbane</i>	350.0	42.5	392.5	33.7	426.2	7.9	75.3
Brisbane City Inner Ring	85.2	13.2	98.3	12.6	111.0	11.4	72.5
Brisbane City Outer Ring	107.7	12.5	120.3	6.9	127.2	5.4	73.8
South and East BSD Balance	59.4	6.0	65.4	4.0	69.4	5.8	79.2
North and West BSD Balance	97.6	10.9	108.5	10.1	118.6	8.5	77.6
<i>Balance of Queensland</i>	406.1	42.0	448.1	43.2	491.3	8.8	73.1
South and East Moreton	73.9	8.6	82.5	8.7	91.2	9.5	72.0
North and West Moreton	55.0	9.2	64.2	9.1	73.3	12.4	72.3
Wide Bay-Burnett	42.8	3.2	46.1	8.4	54.5	15.4	68.7
Darling Downs and South-West	61.5	5.3	66.8	4.1	70.9	5.8	75.0
Mackay, Fitzroy and Central-West	67.6	6.5	74.1	5.8	79.9	7.3	71.0
Northern and North-West	46.4	3.1	49.5	4.4	53.9	8.2	73.0
Far North	58.9	6.1	64.9	* 2.8	67.7	* 4.1	80.7
<b>Queensland</b>	<b>756.1</b>	<b>84.4</b>	<b>840.6</b>	<b>77.0</b>	<b>917.5</b>	<b>8.4</b>	<b>74.1</b>
<b>FEMALES</b>							
<i>Brisbane</i>	177.9	127.0	304.9	25.8	330.7	...	56.0
Brisbane City Inner Ring	55.7	26.2	81.8	7.2	89.0	8.1	56.9
Brisbane City Outer Ring	52.1	44.5	96.6	7.0	103.7	6.8	54.7
South and East BSD Balance	25.1	21.9	47.0	4.1	51.1	8.0	56.7
North and West BSD Balance	45.0	34.4	79.4	7.6	87.0	8.7	56.4
<i>Balance of Queensland</i>	180.4	145.6	326.0	30.7	356.7	8.6	53.1
South and East Moreton	36.0	29.4	65.4	7.4	72.8	10.2	56.0
North and West Moreton	23.5	22.0	45.5	5.6	51.0	10.9	51.8
Wide Bay-Burnett	18.4	18.9	37.3	* 2.3	39.5	* 5.7	48.0
Darling Downs and South-West	24.1	24.8	48.9	3.6	52.5	6.9	53.6
Mackay, Fitzroy and Central-West	26.2	20.7	47.0	4.6	51.5	8.9	47.7
Northern and North-West	23.1	12.9	35.9	* 2.4	38.3	* 6.2	54.4
Far North	29.2	16.9	46.1	4.9	51.0	9.5	60.8
<b>Queensland</b>	<b>358.3</b>	<b>272.6</b>	<b>630.9</b>	<b>56.6</b>	<b>687.5</b>	<b>8.2</b>	<b>54.5</b>
<b>PERSONS</b>							
<i>Brisbane</i>	527.9	169.5	697.3	59.6	756.9	7.9	65.5
Brisbane City Inner Ring	140.8	39.3	180.2	19.8	200.0	9.9	64.6
Brisbane City Outer Ring	159.9	57.0	216.9	14.0	230.9	6.1	63.8
South and East BSD Balance	84.5	27.9	112.4	8.1	120.5	6.7	67.8
North and West BSD Balance	142.7	45.2	187.9	17.7	205.6	8.6	66.9
<i>Balance of Queensland</i>	586.6	187.6	774.1	73.9	848.1	8.7	63.1
South and East Moreton	109.9	38.0	147.9	16.1	164.0	9.8	63.9
North and West Moreton	78.4	31.2	109.6	14.7	124.3	11.8	62.2
Wide Bay-Burnett	61.2	22.1	83.4	10.7	94.0	11.3	58.1
Darling Downs and South-West	85.6	30.1	115.6	7.7	123.4	6.3	64.1
Mackay, Fitzroy and Central-West	93.8	27.2	121.0	10.4	131.4	7.9	59.6
Northern and North-West	69.5	15.9	85.5	6.8	92.2	7.3	63.9
Far North	88.1	23.0	111.1	7.7	118.7	6.4	70.8
<b>Queensland</b>	<b>1,114.4</b>	<b>357.0</b>	<b>1,471.5</b>	<b>133.5</b>	<b>1,605.0</b>	<b>8.3</b>	<b>64.2</b>

TABLE 9 — LABOUR FORCE STATUS: AGE BY MAJOR STATISTICAL REGION, QUEENSLAND, NOVEMBER 1994

Age group (years)	Employed			Unemployed '000	Labour force '000	Unem- ployment rate %	Partici- pation rate %
	Full-time	Part-time	Total				
	'000	'000	'000				
<b>BRISBANE MAJOR STATISTICAL REGION</b>							
15-24	99.7	56.2	156.0	23.6	179.6	13.1	72.0
15-19	22.4	33.6	56.0	11.3	67.2	16.8	58.7
20-24	77.3	22.7	100.0	12.3	112.3	11.0	83.3
25-44	275.3	66.1	341.4	26.1	367.5	7.1	80.8
45 and over	152.8	47.1	199.9	9.9	209.8	4.7	46.4
<b>Total</b>	<b>527.9</b>	<b>169.5</b>	<b>697.3</b>	<b>59.6</b>	<b>756.9</b>	<b>7.9</b>	<b>65.5</b>
<b>BALANCE OF QUEENSLAND</b>							
15-24	104.6	49.8	154.4	26.4	180.8	14.6	70.5
15-19	30.2	31.4	61.5	14.4	75.9	19.0	60.2
20-24	74.4	18.4	92.8	12.0	104.9	11.5	80.5
25-44	300.4	88.8	389.2	31.8	421.0	7.6	80.2
45 and over	181.6	49.0	230.6	15.7	246.3	6.4	43.8
<b>Total</b>	<b>586.6</b>	<b>187.6</b>	<b>774.1</b>	<b>73.9</b>	<b>848.1</b>	<b>8.7</b>	<b>63.1</b>
<b>QUEENSLAND</b>							
15-24	204.3	106.0	310.3	50.0	360.4	13.9	71.2
15-19	52.6	64.9	117.5	25.7	143.2	17.9	59.5
20-24	151.8	41.1	192.8	24.4	217.2	11.2	81.9
25-44	575.7	154.9	730.6	57.9	788.4	7.3	80.5
45 and over	334.4	96.1	430.6	25.6	456.2	5.6	45.0
<b>Total</b>	<b>1,114.4</b>	<b>357.0</b>	<b>1,471.5</b>	<b>133.5</b>	<b>1,605.0</b>	<b>8.3</b>	<b>64.2</b>

DIAGRAM 5 - UNEMPLOYMENT RATE BY AGE, QUEENSLAND

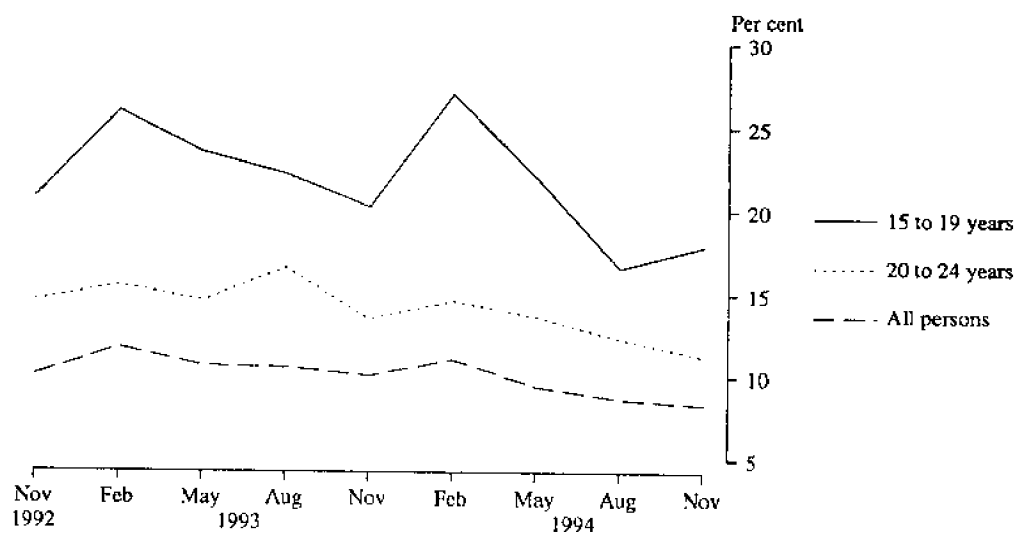


TABLE 10 — LABOUR FORCE STATUS: PERSONS AGED 15 TO 19 YEARS BY FULL-TIME ATTENDANCE AT AN EDUCATIONAL INSTITUTION, QUEENSLAND, NOVEMBER 1994

Sex	Employed			Unemployed	Labour force	Not in labour force	Civilian population aged 15 to 19 years	Unemployment rate	Participation rate
	Full-time	Part-time	Total						
	'000	'000	'000	'000	'000	'000	'000	%	%
ATTENDING NEITHER SCHOOL NOR A TERTIARY EDUCATIONAL INSTITUTION FULL-TIME									
Males	32.1	5.3	37.4	7.2	44.6	4.0	48.6	16.2	91.8
Females	19.4	9.2	28.5	7.7	36.3	5.3	41.5	21.3	87.3
Persons	51.4	14.5	65.9	15.0	80.9	9.3	90.1	18.5	89.7
ATTENDING A TERTIARY EDUCATIONAL INSTITUTION FULL-TIME									
Males	* 0.6	5.4	6.1	* 1.0	7.0	9.1	16.1	* 14.0	43.7
Females	* 0.2	9.3	9.5	* 1.6	11.1	6.7	17.8	* 14.0	62.3
Persons	* 0.8	14.8	15.6	* 2.5	18.1	15.8	33.9	* 14.0	53.5
ATTENDING SCHOOL									
Males	* 0.3	13.5	13.9	* 3.0	16.9	41.9	58.7	* 17.8	28.7
Females	* 0.0	22.2	22.2	5.2	27.3	30.7	58.0	18.9	47.1
Persons	* 0.3	35.7	36.0	8.2	44.2	72.5	116.7	18.5	37.9
TOTAL									
Males	33.0	24.3	57.3	11.2	68.5	54.9	123.4	16.4	55.5
Females	19.5	40.7	60.2	14.5	74.7	42.6	117.3	19.4	63.7
Persons	52.6	64.9	117.5	25.7	143.2	97.6	240.7	17.9	59.5

TABLE 11 — LABOUR FORCE STATUS: PERSONS AGED 20 TO 24 YEARS BY FULL-TIME ATTENDANCE AT A TERTIARY INSTITUTION, QUEENSLAND, NOVEMBER 1994

Sex	Employed			Unemployed	Labour force	Not in labour force	Civilian population aged 20 to 24 years	Unemployment rate	Participation rate
	Full-time	Part-time	Total						
	'000	'000	'000	'000	'000	'000	'000	%	%
NOT ATTENDING A TERTIARY EDUCATIONAL INSTITUTION FULL-TIME									
Males	87.4	8.9	96.3	13.6	109.9	6.5	116.3	12.4	94.5
Females	62.0	18.3	80.3	9.1	89.4	23.0	112.4	10.2	79.5
Persons	149.4	27.2	176.6	22.7	199.3	29.5	228.8	11.4	87.1
ATTENDING A TERTIARY EDUCATIONAL INSTITUTION FULL-TIME									
Males	* 0.8	6.7	7.4	* 0.4	7.9	9.7	17.6	* 5.6	44.8
Females	* 1.6	7.2	8.8	* 1.2	10.0	8.8	18.9	* 12.2	53.2
Persons	* 2.4	13.9	16.2	* 1.7	17.9	18.5	36.4	* 9.3	49.2
TOTAL									
Males	88.2	15.5	103.7	14.0	117.8	16.2	133.9	11.9	87.9
Females	63.6	25.5	89.1	10.3	99.4	31.8	131.3	10.4	75.7
Persons	151.8	41.1	192.8	24.4	217.2	48.0	265.2	11.2	81.9

TABLE 12 — EMPLOYED PERSONS: FULL-TIME OR PART-TIME STATUS, QUEENSLAND

Month	Females								Persons	
	Males		Married		Not married		Total			
	Full-time	Part-time	Full-time	Part-time	Full-time	Part-time	Full-time	Part-time	Full-time	Part-time
'000										
1993 —										
September	715.7	85.0	194.1	172.0	133.7	85.4	327.7	257.4	1,043.4	342.4
October	723.6	86.3	196.0	163.8	135.7	87.1	331.7	250.8	1,055.4	337.1
November	725.8	78.6	193.5	166.1	138.3	81.3	331.7	247.4	1,057.6	326.0
December	733.9	81.4	199.2	160.6	156.0	86.4	355.2	247.0	1,089.2	328.4
1994 —										
January	722.8	90.7	196.5	146.2	153.1	78.2	349.6	224.4	1,072.4	315.1
February	719.8	89.7	190.2	162.6	151.8	81.8	342.0	244.4	1,061.9	334.1
March	721.8	90.0	193.2	166.9	151.9	84.5	345.1	251.4	1,066.9	341.4
April	723.2	88.0	190.3	169.3	148.7	83.9	339.0	253.2	1,062.2	341.3
May	734.3	89.9	194.3	169.1	149.3	86.3	343.6	255.4	1,077.9	345.3
June	744.9	86.3	205.0	165.8	148.2	81.1	353.2	246.9	1,098.1	333.2
July	746.8	87.0	200.9	167.4	149.0	84.6	349.8	252.0	1,096.6	339.0
August	749.3	82.4	204.1	170.2	145.7	82.1	349.8	252.3	1,099.0	334.7
September	758.7	84.9	206.5	183.3	150.7	86.6	357.2	269.9	1,115.9	354.8
October	757.0	88.6	217.3	172.6	142.1	89.1	359.4	261.7	1,116.4	350.3
November	756.1	84.4	211.2	179.0	147.1	93.6	358.3	272.6	1,114.4	357.0
PER CENT (a)										
1993 —										
September	89.4	10.6	53.0	47.0	61.0	39.0	56.0	44.0	75.3	24.7
October	89.3	10.7	54.5	45.5	60.9	39.1	56.9	43.1	75.8	24.2
November	90.2	9.8	53.8	46.2	63.0	37.0	57.3	42.7	76.4	23.6
December	90.0	10.0	55.4	44.6	64.4	35.6	59.0	41.0	76.8	23.2
1994 —										
January	88.9	11.1	57.3	42.7	66.2	33.8	60.9	39.1	77.3	22.7
February	88.9	11.1	53.9	46.1	65.0	35.0	58.3	41.7	76.1	23.9
March	88.9	11.1	53.7	46.3	64.3	35.7	57.9	42.1	75.8	24.2
April	89.1	10.9	52.9	47.1	63.9	36.1	57.2	42.8	75.7	24.3
May	89.1	10.9	53.5	46.5	63.4	36.6	57.4	42.6	75.7	24.3
June	89.6	10.4	55.3	44.7	64.6	35.4	58.9	41.1	76.7	23.3
July	89.6	10.4	54.5	45.5	63.8	36.2	58.1	41.9	76.4	23.6
August	90.1	9.9	54.5	45.5	64.0	36.0	58.1	41.9	76.7	23.3
September	89.9	10.1	53.0	47.0	63.5	36.5	57.0	43.0	75.9	24.1
October	89.5	10.5	55.7	44.3	61.5	38.5	57.9	42.1	76.1	23.9
November	90.0	10.0	54.1	45.9	61.1	38.9	56.8	43.2	75.7	24.3

(a) Full-time and part-time as a proportion of employed persons in each category.

**TABLE 13 — EMPLOYED PERSONS: AVERAGE HOURS WORKED BY STATUS IN EMPLOYMENT, INDUSTRY (ANZSIC) AND OCCUPATION, QUEENSLAND, NOVEMBER 1994**

<i>Status in employment, industry division and occupation group</i>	<i>Females</i>			<i>Total</i>	<i>Persons</i>
	<i>Males</i>	<i>Married</i>	<i>Not married</i>		
<b>Status in employment</b>					
Employers	55.7	33.8	46.9	35.1	48.8
Own account workers	47.4	28.9	27.4	28.6	40.8
Employees	40.4	30.6	29.2	30.0	35.8
Contributing family workers	24.5	15.1	11.0	14.1	17.2
<b>Industry division</b>					
Agriculture, forestry and fishing	55.1	30.9	37.8	32.0	47.8
Mining	45.8	* 45.0	* 41.3	* 42.7	45.5
Manufacturing	41.4	32.6	33.1	32.7	39.2
Electricity, gas and water supply	38.2	* 25.3	* 36.3	* 30.9	37.2
Construction	42.4	17.5	32.9	19.8	39.0
Wholesale trade	43.2	30.8	34.5	32.0	40.0
Retail trade	39.1	31.1	22.3	26.9	32.4
Accommodation, cafes and restaurants	39.6	33.4	24.5	28.9	33.4
Transport and storage	42.2	29.5	34.7	31.0	39.9
Communication services	40.5	30.1	37.1	32.7	38.1
Finance and insurance	42.9	30.9	35.4	32.7	36.7
Property and business services	42.8	30.1	34.5	31.8	37.9
Government administration and defence	37.1	33.6	32.8	33.2	35.5
Education	41.2	33.3	30.2	32.5	35.6
Health and community services	39.6	29.3	31.1	30.0	32.0
Cultural and recreational services	41.7	30.5	26.2	28.9	34.2
Personal and other services	39.1	25.0	28.3	26.8	32.8
<b>Occupation group</b>					
Managers and administrators	55.9	42.4	42.3	42.4	52.5
Professionals	44.7	36.1	36.1	36.1	40.9
Para-professionals	39.7	31.4	33.5	32.2	36.5
Tradespersons	41.6	29.1	40.1	33.5	40.8
Clerks	37.9	27.2	33.8	29.2	31.0
Salespersons and personal service workers	39.7	30.5	23.5	27.0	31.3
Plant and machine operators and drivers	43.0	32.9	28.2	31.1	41.7
Labourers and related workers	35.3	26.4	22.6	24.9	31.5
Full-time workers	45.2	41.8	38.9	40.6	43.7
Part-time workers	15.6	16.8	13.7	15.7	15.7
<b>Total</b>	<b>42.2</b>	<b>30.3</b>	<b>29.1</b>	<b>29.9</b>	<b>36.9</b>



TABLE 14 — EMPLOYED PERSONS: STATUS IN EMPLOYMENT, INDUSTRY (ANZSIC) AND OCCUPATION, QUEENSLAND, NOVEMBER 1994 ('000)

Particulars	Females				Persons
	Males	Married	Not married	Total	
<b>Status in employment</b>					
Employers	56.4	25.6	* 2.9	28.5	84.9
Own account workers	106.0	46.1	10.6	56.7	162.6
Employees	674.1	311.2	224.9	536.0	1,210.2
Contributing family workers	4.1	7.3	* 2.4	9.7	13.7
<b>Industry division</b>					
Agriculture, forestry and fishing	58.4	22.4	4.5	26.9	85.3
Mining	12.2	* 0.4	* 0.7	* 1.1	13.2
Manufacturing	136.5	30.8	13.5	44.4	180.9
Electricity, gas and water supply	12.3	* 0.9	* 0.9	* 1.7	14.0
Construction	121.1	18.2	* 3.3	21.6	142.7
Wholesale trade	62.8	17.1	8.3	25.4	88.1
Retail trade	98.3	62.9	57.3	120.2	218.6
Accommodation, cafes and restaurants	32.3	21.6	22.2	43.8	76.1
Transport and storage	63.3	11.6	4.7	16.3	79.5
Communication services	15.3	4.3	* 2.5	6.7	22.0
Finance and insurance	17.4	16.0	10.7	26.7	44.1
Property and business services	74.6	36.8	23.5	60.3	134.8
Government administration and defence	29.1	12.2	9.3	21.6	50.7
Education	35.0	45.8	16.0	61.9	96.9
Health and community services	27.2	62.5	38.0	100.5	127.7
Cultural and recreational services	13.9	12.3	7.1	19.4	33.3
Personal and other services	30.9	14.4	18.1	32.5	63.5
<b>Occupation group</b>					
Managers and administrators	105.8	27.8	7.2	35.0	140.8
Professionals	93.1	45.7	26.5	72.2	165.3
Para-professionals	46.1	21.3	12.9	34.2	80.3
Tradespersons	203.6	14.0	9.3	23.3	226.9
Clerks	48.8	133.2	59.1	192.4	241.2
Salespersons and personal service workers	88.3	86.5	85.8	172.3	260.6
Plant and machine operators and drivers	99.0	7.4	4.7	12.0	111.1
Labourers and related workers	155.9	54.2	35.2	89.4	245.2
<b>Total</b>	<b>840.6</b>	<b>390.2</b>	<b>240.7</b>	<b>630.9</b>	<b>1,471.5</b>

TABLE 15 — EMPLOYED PERSONS: INDUSTRY (ANZSIC) BY OCCUPATION, QUEENSLAND, NOVEMBER 1994 ('000)

Industry division	Occupation group								Total
	Managers and administrators	Professionals	Para-professionals	Tradespersons	Clerks	Salespersons and personal service workers	Plant and machine operators and drivers	Labourers and related workers	
Agriculture, forestry and fishing	41.9	* 0.2	* 1.5	* 2.1	4.4	* 1.5	5.7	28.0	85.3
Mining	* 0.6	* 2.0	* 1.3	* 1.9	* 1.1	* 0.0	4.8	* 1.6	13.2
Manufacturing	13.1	6.4	4.2	58.4	21.1	6.5	27.7	43.5	180.9
Electricity, gas and water	* 0.4	* 1.5	3.8	4.1	* 1.8	* 0.2	* 1.5	* 0.7	14.0
Construction	10.5	* 2.6	4.2	68.3	19.4	* 1.5	13.3	22.9	142.7
Wholesale trade	10.3	* 1.1	* 2.0	11.9	18.0	23.9	8.0	12.8	88.1
Retail trade	20.8	* 2.8	* 0.7	31.0	17.4	111.1	5.6	29.1	218.6
Accommodation, cafes and restaurants	9.5	* 0.9	* 0.2	11.1	5.6	27.8	* 1.5	19.4	76.1
Transport and storage	5.1	* 0.7	4.1	7.1	14.6	8.3	28.7	10.9	79.5
Communication services	* 0.9	* 2.2	* 0.6	4.9	9.2	* 0.2	3.5	* 0.4	22.0
Finance and insurance	4.5	* 2.2	* 0.4	* 0.0	20.7	15.9	* 0.0	* 0.4	44.1
Property and business services	7.6	33.5	6.7	* 3.3	39.0	20.1	* 1.1	23.5	134.8
Government administration and defence	* 3.4	8.7	5.2	* 2.3	21.1	* 1.8	* 2.2	6.0	50.7
Education	* 2.8	59.8	* 0.9	* 2.2	21.0	* 0.6	* 0.2	9.4	96.9
Health and community services	* 2.5	23.1	32.3	4.8	18.1	23.2	* 1.5	22.4	127.7
Cultural and recreational services	4.9	11.0	* 2.8	* 2.0	3.9	6.3	* 0.7	* 1.8	33.3
Personal and other services	* 2.0	6.6	9.5	11.6	4.6	11.6	5.2	12.4	63.5
<b>Total</b>	<b>140.8</b>	<b>165.3</b>	<b>80.3</b>	<b>226.9</b>	<b>241.2</b>	<b>260.6</b>	<b>111.1</b>	<b>245.2</b>	<b>1,471.5</b>

TABLE 16 — UNEMPLOYED PERSONS: DURATION OF UNEMPLOYMENT, BRISBANE MAJOR STATISTICAL REGION

Duration of unemployment	1993			1994		
	September	October	November	September	October	November
<b>MALES</b>						
	'000	'000	'000	'000	'000	'000
<b>Unemployed</b>						
Under 4 weeks	6.2	4.7	5.8	5.6	4.9	6.0
4 and under 8 weeks	4.2	4.5	* 2.9	3.8	* 2.8	4.3
8 and under 13 weeks	3.6	4.0	4.0	* 3.0	* 3.0	* 1.7
13 and under 26 weeks	5.2	4.5	4.6	4.9	4.8	4.8
26 and under 52 weeks	10.7	8.7	7.5	6.2	4.9	6.4
52 weeks and over	9.1	11.3	14.3	10.2	8.8	10.6
<b>Total</b>	<b>38.9</b>	<b>37.7</b>	<b>39.0</b>	<b>33.8</b>	<b>29.3</b>	<b>33.7</b>
	<i>weeks</i>	<i>weeks</i>	<i>weeks</i>	<i>weeks</i>	<i>weeks</i>	<i>weeks</i>
<b>Median duration of unemployment</b>	<b>26</b>	<b>26</b>	<b>32</b>	<b>22</b>	<b>22</b>	<b>26</b>
<b>FEMALES</b>						
	'000	'000	'000	'000	'000	'000
<b>Unemployed</b>						
Under 4 weeks	5.0	7.5	* 3.4	4.7	7.3	7.1
4 and under 8 weeks	* 3.2	5.0	5.9	* 2.9	* 2.4	* 2.2
8 and under 13 weeks	* 2.4	* 2.2	3.5	* 2.6	4.0	* 2.6
13 and under 26 weeks	3.6	* 2.5	* 3.0	4.2	* 3.0	* 2.5
26 and under 52 weeks	5.9	5.7	7.5	4.8	3.7	5.0
52 weeks and over	5.9	5.4	6.8	6.1	5.5	6.4
<b>Total</b>	<b>26.0</b>	<b>28.3</b>	<b>30.1</b>	<b>25.3</b>	<b>25.9</b>	<b>25.8</b>
	<i>weeks</i>	<i>weeks</i>	<i>weeks</i>	<i>weeks</i>	<i>weeks</i>	<i>weeks</i>
<b>Median duration of unemployment</b>	<b>21</b>	<b>11</b>	<b>18</b>	<b>19</b>	<b>11</b>	<b>15</b>
<b>PERSONS</b>						
	'000	'000	'000	'000	'000	'000
<b>Unemployed</b>						
Under 4 weeks	11.2	12.2	9.2	10.3	12.2	13.1
4 and under 8 weeks	7.4	9.5	8.7	6.7	5.2	6.4
8 and under 13 weeks	5.9	6.2	7.5	5.6	7.0	4.3
13 and under 26 weeks	8.7	7.0	7.6	9.1	7.8	7.3
26 and under 52 weeks	16.6	14.4	15.0	11.0	8.6	11.4
52 weeks and over	15.0	16.7	21.0	16.3	14.3	17.1
<b>Total</b>	<b>64.9</b>	<b>66.0</b>	<b>69.0</b>	<b>59.1</b>	<b>55.2</b>	<b>59.6</b>
	<i>weeks</i>	<i>weeks</i>	<i>weeks</i>	<i>weeks</i>	<i>weeks</i>	<i>weeks</i>
<b>Median duration of unemployment</b>	<b>23</b>	<b>21</b>	<b>26</b>	<b>21</b>	<b>16</b>	<b>21</b>

TABLE 17 — UNEMPLOYED PERSONS: DURATION OF UNEMPLOYMENT, BALANCE OF QUEENSLAND

Duration of unemployment	1993			1994		
	September	October	November	September	October	November
<b>MALES</b>						
	'000	'000	'000	'000	'000	'000
Unemployed						
Under 4 weeks	6.4	4.6	5.7	5.7	6.4	5.6
4 and under 8 weeks	6.6	4.6	5.7	5.2	5.1	3.5
8 and under 13 weeks	5.5	3.8	3.8	4.3	* 2.8	4.8
13 and under 26 weeks	6.9	6.6	5.9	7.8	5.8	5.0
26 and under 52 weeks	10.0	9.3	10.4	9.3	8.0	9.8
52 weeks and over	24.8	18.4	17.0	12.2	16.4	14.5
<b>Total</b>	<b>60.1</b>	<b>47.4</b>	<b>48.5</b>	<b>44.3</b>	<b>44.6</b>	<b>43.2</b>
	<i>weeks</i>	<i>weeks</i>	<i>weeks</i>	<i>weeks</i>	<i>weeks</i>	<i>weeks</i>
Median duration of unemployment	33	31	31	23	27	30
<b>FEMALES</b>						
	'000	'000	'000	'000	'000	'000
Unemployed						
Under 4 weeks	7.5	5.2	5.8	8.3	5.2	5.1
4 and under 8 weeks	3.9	4.7	4.1	5.7	4.2	3.6
8 and under 13 weeks	4.3	* 2.6	3.8	* 3.4	* 2.8	* 2.6
13 and under 26 weeks	* 2.5	4.3	4.1	* 3.4	* 3.2	4.3
26 and under 52 weeks	8.7	5.7	7.8	8.5	5.3	7.5
52 weeks and over	9.8	9.1	11.4	7.4	6.7	7.5
<b>Total</b>	<b>36.7</b>	<b>31.7</b>	<b>36.9</b>	<b>36.7</b>	<b>27.5</b>	<b>30.7</b>
	<i>weeks</i>	<i>weeks</i>	<i>weeks</i>	<i>weeks</i>	<i>weeks</i>	<i>weeks</i>
Median duration of unemployment	26	21	26	16	14	23
<b>PERSONS</b>						
	'000	'000	'000	'000	'000	'000
Unemployed						
Under 4 weeks	13.9	9.9	11.5	14.0	11.7	10.7
4 and under 8 weeks	10.6	9.4	9.8	10.9	9.3	7.1
8 and under 13 weeks	9.8	6.4	7.6	7.7	5.7	7.5
13 and under 26 weeks	9.4	10.9	9.9	11.2	9.1	9.3
26 and under 52 weeks	18.7	15.0	18.3	17.8	13.3	17.3
52 weeks and over	34.6	27.5	28.3	19.6	23.2	22.0
<b>Total</b>	<b>96.9</b>	<b>79.1</b>	<b>85.4</b>	<b>81.0</b>	<b>72.1</b>	<b>73.9</b>
	<i>weeks</i>	<i>weeks</i>	<i>weeks</i>	<i>weeks</i>	<i>weeks</i>	<i>weeks</i>
Median duration of unemployment	29	26	27	21	26	26

TABLE 18 — UNEMPLOYED PERSONS: DURATION OF UNEMPLOYMENT, QUEENSLAND

Duration of unemployment	1993			1994		
	September	October	November	September	October	November
<b>MALES</b>						
	'000	'000	'000	'000	'000	'000
Unemployed						
Under 4 weeks	12.6	9.3	11.6	11.3	11.3	11.5
4 and under 8 weeks	10.8	9.1	8.5	9.0	7.9	7.8
8 and under 13 weeks	9.1	7.8	7.8	7.3	5.8	6.6
13 and under 26 weeks	12.0	11.1	10.4	12.6	10.7	9.8
26 and under 52 weeks	20.7	18.0	17.9	15.5	12.9	16.2
52 weeks and over	33.9	29.7	31.2	22.4	25.3	25.1
<b>Total</b>	<b>99.1</b>	<b>85.1</b>	<b>87.5</b>	<b>78.1</b>	<b>73.9</b>	<b>77.0</b>
	<i>weeks</i>	<i>weeks</i>	<i>weeks</i>	<i>weeks</i>	<i>weeks</i>	<i>weeks</i>
Median duration of unemployment	30	28	31	23	26	28
<b>FEMALES</b>						
	'000	'000	'000	'000	'000	'000
Unemployed						
Under 4 weeks	12.5	12.7	9.2	13.0	12.6	12.2
4 and under 8 weeks	7.1	9.8	10.0	8.6	6.6	5.8
8 and under 13 weeks	6.7	4.8	7.2	6.0	6.8	5.2
13 and under 26 weeks	6.1	6.8	7.1	7.6	6.2	6.8
26 and under 52 weeks	14.6	11.4	15.3	13.3	9.0	12.6
52 weeks and over	15.7	14.5	18.1	13.5	12.2	13.9
<b>Total</b>	<b>62.7</b>	<b>60.0</b>	<b>67.0</b>	<b>62.0</b>	<b>53.4</b>	<b>56.6</b>
	<i>weeks</i>	<i>weeks</i>	<i>weeks</i>	<i>weeks</i>	<i>weeks</i>	<i>weeks</i>
Median duration of unemployment	21	15	25	17	13	19
<b>PERSONS</b>						
	'000	'000	'000	'000	'000	'000
Unemployed						
Under 4 weeks	25.1	22.0	20.8	24.3	23.9	23.7
4 and under 8 weeks	18.0	18.9	18.5	17.6	14.4	13.6
8 and under 13 weeks	15.8	12.6	15.0	13.3	12.7	11.8
13 and under 26 weeks	18.1	17.9	17.5	20.2	16.9	16.6
26 and under 52 weeks	35.3	29.4	33.2	28.8	21.9	28.8
52 weeks and over	49.6	44.3	49.4	35.8	37.5	39.1
<b>Total</b>	<b>161.8</b>	<b>145.1</b>	<b>154.5</b>	<b>140.1</b>	<b>127.3</b>	<b>133.5</b>
	<i>weeks</i>	<i>weeks</i>	<i>weeks</i>	<i>weeks</i>	<i>weeks</i>	<i>weeks</i>
Median duration of unemployment	26	26	26	21	20	26

TABLE 19 — UNEMPLOYED PERSONS AND UNEMPLOYMENT RATES: INDUSTRY (ANZSIC) (a) AND OCCUPATION OF LAST FULL-TIME JOB, QUEENSLAND

Unemployment category, industry division and occupation group	November 1993		February 1994		May 1994		August 1994		November 1994	
	Number	Rate	Number	Rate	Number	Rate	Number	Rate	Number	Rate
	'000	%	'000	%	'000	%	'000	%	'000	%
Persons who had worked full-time for 2 weeks or more in the last 2 years	86.4	5.9	87.7	5.9	78.7	5.2	73.8	4.9	67.6	4.4
Industry division										
Agriculture, forestry and fishing	6.2	6.7	9.4	10.7	7.0	7.8	5.2	5.7	* 3.4	* 3.8
Manufacturing	16.0	8.6	13.3	7.4	12.3	6.5	12.7	6.8	9.4	4.9
Construction	8.2	6.1	9.4	6.7	7.3	5.3	8.6	5.6	11.1	7.2
Wholesale trade	* 3.2	* 3.7	3.5	4.0	4.3	4.8	4.5	5.0	6.3	6.6
Retail trade	15.0	6.4	15.4	6.4	13.9	5.7	12.8	5.6	12.1	5.2
Health and community services	3.7	3.1	3.7	3.1	* 3.1	* 2.5	3.5	2.7	* 2.6	* 2.0
Cultural and recreational services	3.6	11.6	* 2.9	* 8.6	* 2.1	* 5.9	* 1.6	* 4.9	* 0.2	* 0.7
Other industries	30.5	5.2	30.1	5.0	28.6	4.8	24.9	4.2	22.5	3.6
Occupation group										
Managers and administrators	3.6	2.5	4.1	2.8	3.7	2.5	3.6	2.4	* 2.6	* 1.8
Professionals	4.3	2.7	4.0	2.6	* 3.1	* 1.9	* 2.2	* 1.3	* 1.5	* 0.9
Para-professionals	3.6	4.0	* 1.9	* 2.4	* 2.3	* 3.0	* 1.3	* 1.6	* 1.5	* 1.8
Tradespersons	12.3	5.7	12.7	5.7	11.2	4.8	12.8	5.2	11.2	4.7
Clerks	8.2	3.6	9.5	4.0	8.4	3.6	9.4	3.9	7.3	2.9
Salespersons and personal service workers	15.4	6.0	16.0	6.0	15.5	5.7	14.4	5.5	14.2	5.1
Plant and machine operators and drivers	10.0	8.4	9.7	8.6	6.6	6.1	7.0	6.1	6.6	5.6
Labourers and related workers	29.0	11.2	29.8	11.1	27.9	10.4	23.2	9.1	22.8	8.5
Reason for ceasing last (full)-time job										
Job loser										
Laid off, retrenched	40.1	..	34.5	..	28.3	..	30.5	..	29.5	..
Other	18.7	..	21.2	..	21.1	..	21.3	..	16.1	..
Job leaver	27.6	..	32.0	..	29.3	..	22.0	..	21.9	..
Other										
Persons looking for first job	13.8	..	17.1	..	11.8	..	12.0	..	13.1	..
Former workers	51.9	..	63.9	..	52.4	..	46.5	..	49.4	..
Persons stood down	* 2.3	..	3.9	..	4.0	..	* 3.2	..	3.5	..
<b>Total</b>	<b>154.5</b>	<b>10.0</b>	<b>172.6</b>	<b>11.0</b>	<b>147.0</b>	<b>9.4</b>	<b>135.5</b>	<b>8.6</b>	<b>133.5</b>	<b>8.3</b>
Looking for full-time work	130.2	11.0	139.5	11.6	117.5	9.8	110.3	9.1	105.8	8.7
Looking for part-time work	24.3	6.9	33.1	9.0	29.5	7.9	25.2	7.0	27.7	7.2

(a) Industry estimates prior to August 1994 are based on a concordance between the ASIC Group level and the corresponding ANZSIC Groups. See Glossary, Page 31.

### SPECIAL SURVEYS DATA RELATING TO THE LABOUR FORCE

Although emphasis in the population survey is placed on the regular collection of data on demographic and labour force characteristics, supplementary and special surveys of particular aspects of the labour force are carried out from time to time. The results of these surveys on labour force and related topics are published separately as shown below.

<i>Title of publication</i>	<i>Latest Data</i>	<i>Catalogue No.</i>
<i>Annual and Long Service Leave Taken, Australia</i>	May 1988 to April 1989	6317.0
<i>Career Experience, Australia</i>	February 1993	6254.0
<i>Career Paths of Persons With Trade Qualifications, Australia</i>	1993	6243.0
<i>Career Paths of Qualified Nurses, Australia</i>	March to July 1989	6277.0
<i>Child Care, Australia</i>	June 1993	4402.0
<i>Employment Benefits, Australia</i>	August 1992	6334.0
<i>Survey of Income and Housing Costs and Amenities</i>	1989-90	6546.0
<i>Job Search Experience of Unemployed Persons, Australia</i>	July 1994	6222.0
<i>Labour Force Experience, Australia</i>	March 1994	6206.0
<i>Labour Force Status and Educational Attainment, Australia</i>	February 1994	6235.0
<i>Labour Force Status and Other Characteristics of Families, Australia</i>	June 1994	6224.0
<i>Labour Force Status and Other Characteristics of Migrants, Australia</i>	September 1993	6250.0
<i>Labour Mobility, Australia</i>	February 1994	6209.0
<i>Multiple Jobholding, Australia</i>	July 1991	6216.0
<i>Participation in Education, Australia</i> (Formerly <i>Labour Force Status and Educational Attendance, Australia</i> )	September 1993	6272.0
<i>Persons Employed at Home, Australia</i>	March 1992	6275.0
<i>Persons Not in the Labour Force, Australia</i>	September 1993	6220.0
<i>Persons Who Had Re-entered the Labour Force, Australia</i>	May 1993	6264.0
<i>Persons Who Have Left the Labour Force, Australia</i>	April 1991	6267.0
<i>Retirement and Retirement Intentions, Australia</i>	October 1992	6238.0
<i>Successful and Unsuccessful Job Search Experience, Australia</i>	July 1994	6245.0
<i>Superannuation, Australia</i>	November 1993	6319.0
<i>Trade Union Members, Australia</i>	August 1992	6325.0
<i>Training and Education Experience, Australia</i> (Formerly <i>How Workers Get Their Training, Australia</i> )	1993	6278.0
<i>Transition From Education to Work, Australia</i>	May 1994	6227.0
<i>Underemployed Workers, Australia</i>	May 1991	6265.0
<i>Weekly Earnings of Employees (Distribution), Australia</i>	August 1993	6310.0
<i>Working Arrangements, Australia</i>	August 1993	6342.0

Special tabulations of data from these surveys are available. Please contact Information Inquiries on (07) 222 6351 for further information.

### CUSTOMISED REPORTS

Summary reports at the national, State and regional level can be prepared for any aspect of the labour force required or on any aspect of employment, earnings or industrial conditions. Please contact Information Inquiries on (07) 222 6351 for details or write to Australian Bureau of Statistics, GPO Box 9817, Brisbane Q 4001.

## **RECENT RELEASES OF INTEREST**

### ***Career Paths of Persons With Trade Qualifications, Australia (6243.0), (\$13.00)***

Contains information on persons with trade qualifications classified by: how and when qualified, whether ever worked as tradesperson, whether using trade skills in current job, whether ever left the trade and, if so, when and the reason for doing so. Provides details of persons with unrecognised trade qualifications, training required for recognition of qualifications and field of qualifications. Other details available include demographic and labour force characteristics.

### ***Successful and Unsuccessful Job Search Experience, Australia, July 1994 (6245.0), (\$18.00)***

For persons who had started a wage or salary earning job during the 12 months to July 1994, educational attainment, method of job attainment, whether out of work prior to starting the job, whether full-time or part-time and details of the job. For persons who started a wage and salary earning job during the 12 months and who would have preferred a different occupation, occupation in job when started, active steps taken to find work in preferred occupation and whether job started was in same occupation major group as preferred occupation. For persons who had looked for a wage and salary earning job but had not started one, details of job search experience and type of job looked for.

### ***Job Search Experience of Unemployed Persons, Australia (6222.0), (\$13.00)***

This issue contains estimates of unemployed persons classified by difficulties in finding work, duration of current period of unemployment, age, whether had worked full time, main field of study, sex, whether would move interstate or intrastate if offered a suitable job, birthplace, active steps taken to find work, whether looking for full-time or part-time work, educational attainment, number of spells of looking for work in the previous 12 months. Characteristics and reason for ceasing last full-time job.

### ***Labour Force Status and Characteristics of Families, June 1994 (6224.0), (\$13.00)***

Provides information on family type (eg. married-couple, one parent, etc.) classified by family size, number of employed and unemployed family members, labour force status of husband/wife/head, birthplace of head, number of dependent children, age of wife/head/dependent children. Other details available include demographic and labour force characteristics.

Please contact Information Inquiries on (07) 222 6351 for further information.

## **EARLY RELEASE OF MONTHLY REGIONAL LABOUR FORCE DATA**

Labour force data for Queensland regions are available each month as an annual subscription service or on an ad hoc per month basis.

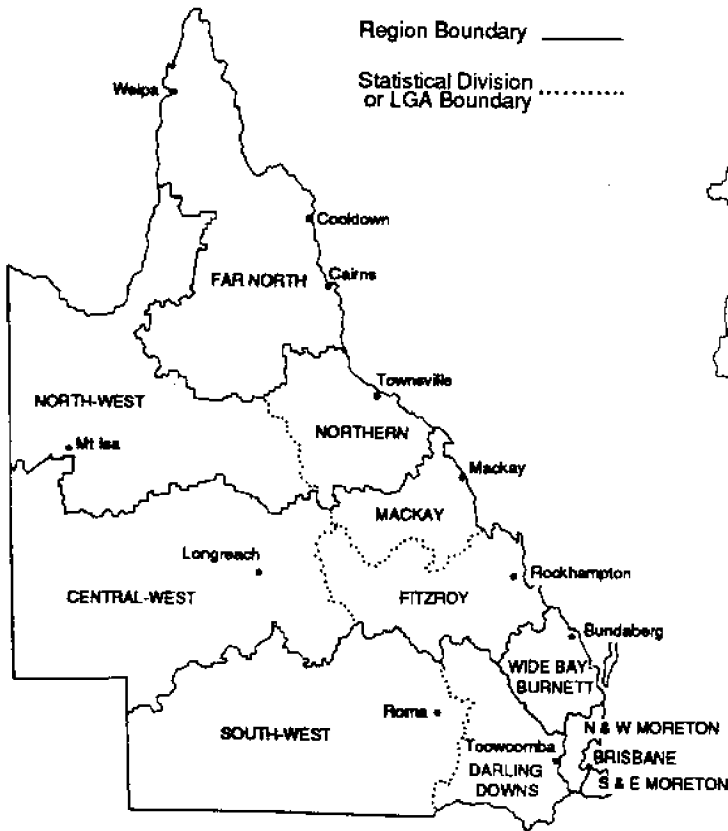
By subscribing to this service you will receive regional labour force data soon after the release of *The Labour Force, Australia, Preliminary (6202.0)*.

Information will be provided on the number of persons employed, unemployed, persons in the labour force, persons not in the labour force, the unemployment rate, the participation rate and youth unemployment for the 11 statistical regions in Queensland.

The annual subscription is \$240 for twelve issues or \$25 on an ad hoc per month basis.

If you are interested in subscribing to this service please contact Client Support on (07) 222 6068.

**STATISTICAL REGIONS,  
QUEENSLAND**



**STATISTICAL REGIONS,  
BRISBANE STATISTICAL DIVISION**



**Brisbane City Inner Ring**

- |                  |                                    |                   |                  |
|------------------|------------------------------------|-------------------|------------------|
| Albion           | Clayfield                          | Highgate Hill     | Red Hill         |
| Alderley         | Coorparoo                          | Holland Park      | Sherwood         |
| Annerley         | Corinda                            | Holland Park West | South Brisbane   |
| Ascot            | Dutton Park                        | Indooroopilly     | Spring Hill      |
| Ashgrove         | East Brisbane                      | Kangaroo Point    | St Lucia         |
| Balmoral         | Enoggera (including Military Camp) | Kedron            | Stafford         |
| Bardon           | Fairfield                          | Kelvin Grove      | Stafford Heights |
| Bowen Hills      | Fortitude Valley - Inner           | Lutwyche          | Taringa          |
| Bulimba          | Fortitude Valley - Remainder       | Milton            | Tarragindi       |
| Camp Hill        | Graceville                         | Moorooka          | Toowong          |
| Cannon Hill      | Grange                             | Morningside       | West End         |
| Carina           | Greenslopes                        | New Farm          | Wilston          |
| Carina Heights   | Hamilton                           | Newmarket         | Windsor          |
| Carindale        | Hawthorne                          | Newstead          | Woolloongabba    |
| Chelmer          | Hendra                             | Norman Park       | Woolloowin       |
| City - Inner     | Herston                            | Nundah            | Yeerongpilly     |
| City - Remainder |                                    | Paddington        | Yeronga          |



# IRDB

## (INTEGRATED REGIONAL DATABASE)

### What is IRDB?

- Consistent, compatible, timely and historical information on regional Australia
- Fast, accurate, flexible and easy to use
- Enables you to tabulate or map ABS regional data for your own purposes
- PUT IRDB TO WORK FOR YOU TODAY



IRDB

Mail to:

ABS  
Sales & Marketing  
GPO Box 9817  
Brisbane Qld 4001

or fax: 229 6042

Yes, I'd like to know more about this product

Miss/Mrs/Ms/Mr:-----

Position: -----

Organisation: -----

Address: -----

Postcode: -----

What is the main activity of your organisation-----

# PC Ausstats

## What is PC AUSSTATS ?

- a 24 hour on line access system to the latest Australian Bureau of Statistics (ABS) data
- enables you to manipulate ABS data for your own purposes
- an access to ABS time series data
- In general the data available on PC AUSSTATS can be used to look for trends in economic and demographic conditions at national and state levels



PC Ausstats

Mail to:

ABS  
Sales and Marketing  
GPO Box 9817  
Brisbane Q 4001

Yes, I'd like to know more about this product

or fax: 229 6042

Miss/Mrs/Ms/Mr: .....

Position: .....

Organisation: .....

Address: .....

Postcode: .....

What is the main activity of your organisation? .....

## EXPLANATORY NOTES

### The population survey

The survey is based on a multi-stage area sample of private dwellings and non-private dwellings (hotels, motels, etc.) and usually covers approximately three-fifths of 1 per cent of the population of Queensland. The information is obtained from the occupants of selected dwellings by carefully chosen and specially trained interviewers. The interviews are generally conducted during a period of 2 weeks beginning on the Monday between the 6th and 12th of each month. The information obtained relates to the week before the interview (i.e. the reference week).

### Scope

2. The labour force survey includes all persons aged 15 years and over except:

- (a) members of the permanent defence forces;
- (b) certain diplomatic personnel of overseas governments, customarily excluded from Census and estimated populations;
- (c) overseas residents in Australia and
- (d) members of non-Australian defence forces (and their dependants) stationed in Australia.

### Coverage

3. In the labour force survey, coverage rules are applied which aim to ensure that each person is associated with only one dwelling and hence has only one chance of selection. The coverage rules are, necessarily, a balance between theoretical and operational considerations. Nevertheless, the chance of a person being enumerated at two separate dwellings in the one survey is considered to be negligible.

4. Persons who are away from their usual residence for 6 weeks or less at the time of interview are enumerated at their usual residence when relevant information can be obtained from other usual residents present at the time of the survey.

### Supplementary and special surveys

5. Emphasis in the population survey is placed on the regular collection of specific data on demographic and labour force characteristics of the population. However, supplementary and special surveys of particular aspects of the labour force or of other subjects are carried out from time to time. Statistics from these surveys are published and are available on request. A list of survey publications on labour force and related topics is shown on page 20.

### Population benchmarks

6. Labour force survey estimates of persons employed, unemployed and not in the labour force are calculated in such a way as to add up to the independently estimated

distribution of the population aged 15 years and over by age and sex. This procedure compensates for under-enumeration in the survey and leads to more reliable estimates. The independent population statistics (benchmarks) are the latest available estimates at the time the labour force survey is conducted, but they usually differ from the official population estimates subsequently published in the quarterly ABS publication *Australian Demographic Statistics* (3101.0) because they are necessarily derived from incomplete information about population changes.

7. Since regular estimates of the population are not available at the regional level, the State benchmarks were used to produce regional estimates. This methodology assumes a common pattern of under-enumeration at the regional level and also ensures that regional estimates add to the State totals.

8. While this procedure can be expected to provide reliable estimates of unemployment and participation rates, it cannot be taken as completely reliable for estimates of numbers involved. For this reason estimates of numbers in each region have not been added to provide an estimate of the total civilian population aged 15 years and over.

### Revision of series

9. Survey estimates are not revised for the usually small amendments of population benchmarks arising from new data on deaths and overseas and internal migration. Revisions are made, however, after each census of population and housing and when population estimation bases are reviewed. These revisions affect unadjusted, seasonally adjusted and trend estimates. The last such revision was made in February 1994 to take account of the results of the 1991 Census of Population and Housing. This affected all the monthly estimates from January 1989 to January 1994.

10. The estimates shown in this publication are based entirely on place of usual residence. Prior to October 1982, the estimates were based on a combination of place of enumeration and place of usual residence.

11. Until February 1978, surveys were conducted in February, May, August and November each year from 1964. From February 1978 the survey has been conducted on a monthly basis.

12. The questionnaire used in the survey for the collection of labour force data has been revised a number of times. Details of these changes have been published in *Information Paper: Questionnaires Used in the Labour Force Survey* (6232.0) in March 1978, December 1981, August 1984, June 1986, June 1991 and March 1993.

### Comparability of series

13. As noted in paragraph 9, estimates from January 1989 have been revised to conform to revised population

EXPLANATORY NOTES — *continued*

estimates following the 1991 Census of Population and Housing and are thus not strictly comparable with estimates for periods prior to January 1989 which have not been revised.

14. Regional estimates are based on statistical regions from September 1987. They are not comparable with estimates prior to that date which were based on differently composed dissemination regions.

15. Comparability with estimates produced from the quarterly survey of employment and earnings is affected by the use of a different survey methodology and definitions. The labour force survey provides estimates of people in jobs whereas the survey of employment and earnings provides an estimate of the number of jobs held by employees. A more detailed description of the differences between these two series is provided in *Information Paper: Comparison of Employment Estimates from the Labour Force Survey and the Survey of Employment and Earnings* (6263.0).

**Reliability of estimates**

16. Estimates in this publication are subject to two sources of error.

(a) *Sampling error.* Since the estimates are based on information obtained from occupants of a sample of dwellings they, and the movements derived from them, may differ from the figures that would have been produced if all dwellings had been included in the survey. More information on this topic is given in the Technical Notes.

(b) *Non-sampling error.* Inaccuracies may occur because of imperfections in reporting by respondents and interviewers and errors made in coding and processing data. These inaccuracies may occur in any enumeration, whether it be a full count or a sample. Every effort is made to reduce the non-sampling error to a minimum by careful design of questionnaires, intensive training and supervision of interviewers and efficient operating procedures.

**Reliability of regional labour force estimates**

17. While the Labour Force Survey is designed primarily to produce reliable estimates at the national and State or Territory level, it also delivers estimates for a number of regions within States.

As with the national and State estimates, regional labour force estimates are subject to sampling error. Since estimates for regions are components of corresponding State level and thus are based on a considerably smaller sample size, they are subject to higher relative standard errors. Care should therefore be taken in the interpretation of regional estimates, particularly when comparing month-to-month movements. Tables of standard errors for each region are available from the ABS.

**Survey sample redesign**

18. The labour force survey sample was redesigned and reselected using information collected in the 1991 Census of Population and Housing. The new sample was phased in over the period September to December 1992. For details, see *Information Paper: Labour Force Survey — Sample Design* (6269.0).

19. For the most part, one quarter of the new sample was introduced each month so that, by December 1992, the entire new sample was in place. Replacement occurred generally at the rotation group level with two groups substituted each month. Such a pattern of implementation means that any changes to labour force estimates due to differences between the two samples, or any other influences, was spread over 4 months rather than being concentrated in one inter-month period.

20. This phase-in scheme applied to the private dwelling sample in urban areas. The new sample for non-private dwellings and private dwellings in rural areas was introduced in a single stage in November 1992.

21. The sampling fraction differs for States and Territories to enable estimates of reasonable accuracy to be produced at State level as well as for Australia. The sampling fraction for Queensland is 1 in 195.

**Potential effects on labour force survey estimates**

22. Implications for estimates produced from the Labour Force Survey due to sample redesign and its implementation are as follows:

(a) The sampling error in Queensland increased overall initially by about 8 per cent over the previous level but will decline gradually during the life of the new sample. There were also higher standard errors for the estimates of month-to-month movements produced during the period September 1992 to December 1992 compared with those for the corresponding series produced prior to this period and from January 1993 onwards. *Overall, these are estimated to be up to 20 per cent higher than the normal standard errors for monthly movements.*

(b) Analysis has shown that the unemployment rate was marginally higher (less than 0.5 percentage points) for those persons in sample for the first time. Normally, this will not affect the overall estimates of month-to-month movements because the number of persons in sample does not change significantly. However, during the transition period, there were twice as many as usual in sample for the first time. This may have caused a small upward movement (of less than 0.1 percentage points) in the unemployment rate from August 1992 to September 1992 and a compensating decrease from December 1992 to January 1993.

## EXPLANATORY NOTES—continued

**Changes to regions**

23. The following changes to the existing Queensland labour force dissemination regions took effect from September 1992:

The Brisbane Major Statistical Region has been expanded to include all of the Shire of Pine Rivers and additional parts of the Shires of Caboolture, Beaudesert, Moreton and Albert. 'South and East BSD Balance Statistical Region' and 'North and West BSD Balance Statistical Region' have been enlarged with corresponding reductions to 'South and East Moreton Statistical Region' and 'North and West Moreton Statistical Region'.

**Seasonal adjustment**

24. Seasonal adjustment is a means of removing the estimated effects of normal seasonal variation from the series so that the effect of other influences on the series can be more clearly recognised. Seasonal adjustment does not remove the irregular or non-seasonal influences which may be present in any particular month. Influences that are volatile can still make it difficult to interpret the movement of the series even after adjustment for seasonal variation. Seasonal factors are reviewed annually to take account of each additional year of original data.

**Trend estimation**

25. Smoothed seasonally adjusted series produce a measure of trend by reducing the impact of the irregular component of the series. The trend estimates are derived by applying a 13-term Henderson-weighted moving average to the respective seasonally adjusted series. These trend series are used to analyse the underlying behaviour of the series over time.

26. While this smoothing technique enables estimates to be produced which include the latest month, it does result in revisions to the most recent months as additional observations become available. Generally, subsequent revisions become smaller and after 3 months have a negligible impact on the series. There will also be revisions as a result of the annual review of seasonal factors.

**Month-to-month movements**

27. Care should be taken in the interpretation of month-to-month movements in labour force survey estimates as they are subject to sampling and non-sampling variability as explained in paragraph 16.

**Related publications**

28. Users may also wish to refer to the following publications which are available on request:

*The Labour Force, Australia, Preliminary* (6202.0) – Monthly (\$11.00)

*The Labour Force, Australia* (6203.0) – Monthly (\$16.50)

*The Labour Force, Australia* (6204.0) – Latest issue: 1978 to 1989

*Monthly Summary of Statistics* (1304.3) – Monthly (\$10.00)

*Economic Indicators* (1307.3) – Monthly (\$6.50)

*Information Paper: Comparison of Employment Estimates from the Labour Force Survey and the Survey of Employment and Earnings* (6263.0) – Latest issue: July 1985

*Information Paper: A Guide to Smoothing Time Series — Estimates of 'Trend'* (1316.0) – Latest issue: 1987

*Information Paper: Time Series Decomposition — an Overview* (1317.0) – Latest issue: 1987

*Information Paper: Labour Force Survey — Sample Design* (6269.0) – Latest issue: September 1992

*Information Paper: Labour Force Survey — Measuring Teenage Unemployment* (6270.0) – Latest issue: October 1987

*Information Paper: Measuring Employment and Unemployment* (6279.0) – New issue: August 1991

*Information Paper: Regional Labour Force Statistics* (6262.0) – Latest issue: September 1992

29. Current publications produced by the ABS are listed in the *Catalogue of Publications and Products* (1101.0). The ABS also issues the *Publications Advice* (1105.0) on Tuesdays and Fridays which lists publications to be released in the next few days. Both the *Catalogue* and the *Publications Advice* are available from any ABS office.

**Unpublished statistics**

30. As well as the statistics included in this and related publications, the ABS may have other relevant unpublished data available. Inquiries should be made to the contact shown at the front of this publication.

**Symbols and other usages**

- .. not applicable
- \* subject to sampling variability too high for most practical purposes; See paragraphs 8 and 9 in the Technical Notes

31. Where figures have been rounded, discrepancies may occur between totals and the sums of the component items.

## TECHNICAL NOTES

### Estimation procedure

The labour force estimates are derived from the monthly population survey by use of a complex ratio estimation procedure, which ensures that the survey estimates conform to an independently estimated distribution of the population by age and sex, rather than to the age and sex distribution within the sample itself. This procedure compensates for under-enumeration in the survey and leads to more reliable estimates.

2. Since regular estimates of the population are not available at the regional level, the State benchmarks were used to produce regional estimates. This methodology assumes a common pattern of under-enumeration at the regional level and also ensures that regional estimates add to the State totals.

### Data quality

3. Two types of error are possible in an estimate based on a sample survey: sampling error and non-sampling error. *Non-sampling error* is explained in the Explanatory Notes, paragraph 16(b). The *sampling error* is a measure of the variability that occurs by chance because a sample, rather than the entire population, is surveyed.

#### Standard error of estimates

4. One measure of the variability of estimates which occurs as a result of surveying only a sample of the population is the *standard error* (SE).

5. There are about two chances in three that a sample estimate will differ by less than one standard error from the figure that would have been obtained if all dwellings had been included and about 19 chances in 20 that the difference will be less than two standard errors.

6. The standard error of an estimate can be obtained from Table A. Linear interpolation should be used to calculate the standard error of estimates falling between the sizes of estimates listed in the table (see example following Table A).

7. Standard errors for some estimates, e.g. unemployment, can vary from those shown in the tables.

Methods for calculating the standard errors of these estimates are shown in the table below.

#### Relative standard error

8. Another measure of sampling variability is the *relative standard error* (RSE). This is obtained by expressing the standard error as a percentage of the estimate to which it refers. The relative standard error is a useful measure in that it provides an immediate indication of the percentage errors likely to have occurred due to sampling and thus avoids the need to refer also to the size of the estimate.

9. In the tables in this publication, only estimates with relative standard errors of 25 per cent or less, and percentages based on such estimates, are considered sufficiently reliable for most purposes. However, estimates and percentages with larger relative standard errors have been included and are preceded by an asterisk (e.g. \* 3.0) to indicate they are subject to high standard errors and should be used with caution. Small estimates are subject to such high standard errors (relative to the size of the estimate) as to detract seriously from their value for most reasonable use.

#### Standard error of movement

10. The movement in the level of an estimate is also subject to sampling variability. The standard error of the movement depends on the levels of the estimates from which the movement is obtained rather than the size of the movement. Standard errors of monthly movements are given in Table B. These estimates apply only to estimates of movements between two consecutive months.

11. Movements between corresponding months of consecutive quarters, i.e. *quarterly movements*, can be obtained by multiplying the figure in Table B by 1.21. Standard errors of movements between corresponding months of consecutive years, i.e. *annual movements*, can be obtained by multiplying the figures in Table A by 1.3. When using Tables A or B to calculate standard errors of movements, refer to the larger of the two estimates from which the movement is derived.

### METHODS FOR CALCULATING THE STANDARD ERRORS FOR SELECTED ESTIMATES

<i>Measure of reliability to be determined</i>	<i>Method</i>
Standard errors of estimates of employed persons. Standard errors of estimates of unemployed persons. Standard errors of estimates of persons not in the labour force. Standard errors of rates (e.g. the unemployment rate which is based on the number of unemployed persons expressed as a percentage of the number of persons in the labour force).	Determine the SE from Table A directly. Multiply the SE from Table A by 0.97. Multiply the SE from Table A by 1.06. Determine the RSE of the numerator (x) and the denominator (y) then apply the following formula.
Standard error of average hours worked.	$RSE(x/y) = \sqrt{[RSE(x)]^2 + [RSE(y)]^2}$ Determine the RSE for the number of persons on which the average is based and multiply this by 0.7.
Standard error of median duration of unemployment.	Determine the RSE for the number of persons on which the median is based and multiply this by 2.0.
Standard error of monthly movements. Standard error of quarterly movements.	Using Table B, look up the SE of the larger estimate. Determine the standard error of the larger estimate (using Table A) and multiply this by 1.21.
Standard error of annual movements.	Determine the standard error of the larger estimate (using Table A) and multiply this by 1.3.

TECHNICAL NOTES — *continued*

TABLE A — STANDARD ERRORS OF ESTIMATES FOR STATISTICAL REGIONS AND QUEENSLAND

Size of estimate	<i>Brisbane (MSR) Statistical Regions</i>					
	<i>Queensland; Brisbane (MSR); Balance of Queensland</i>	<i>Brisbane City Inner Ring</i>	<i>Brisbane City Outer Ring</i>	<i>South and East Brisbane Statistical Division Balance</i>	<i>North and West Brisbane Statistical Division Balance</i>	
	<i>No.</i>	<i>No.</i>	<i>No.</i>	<i>No.</i>	<i>No.</i>	<i>No.</i>
200	210	160	170	170	170	170
300	260	200	210	220	220	210
500	340	260	270	280	280	280
700	400	310	320	340	340	330
1,000	480	380	390	410	410	400
1,500	590	470	480	500	500	500
2,000	680	540	560	590	590	580
2,500	750	610	630	660	660	650
3,000	820	670	690	720	720	720
4,000	940	780	800	840	840	830
5,000	1,050	880	900	950	950	940
7,000	1,200	1,050	1,100	1,150	1,150	1,100
10,000	1,400	1,250	1,300	1,350	1,350	1,350
15,000	1,700	1,550	1,600	1,700	1,700	1,650
20,000	1,950	1,800	1,850	1,950	1,950	1,950
30,000	2,300	2,250	2,300	2,450	2,450	2,400
50,000	2,850	2,950	3,050	3,150	3,150	3,150
70,000	3,250	3,500	3,600	3,800	3,800	3,750
100,000	3,750	4,250	4,350	4,550	4,550	4,500
150,000	4,400	5,200	5,400	5,600	5,600	5,600
200,000	4,950	6,100	6,300	6,600	6,600	6,500
300,000	5,800	7,500	7,700	8,100	8,100	8,000
500,000	7,000	9,900	10,100	10,600	10,600	10,500
1,000,000	8,900	..	..	..	..	..
2,000,000	11,300	..	..	..	..	..

Size of estimate	<i>Balance of Queensland Statistical Regions</i>						
	<i>South and East Moreton</i>	<i>North and West Moreton</i>	<i>Wide Bay-Burnett</i>	<i>Darling Downs and South-West</i>	<i>Mackay, Fitzroy and Central-West</i>	<i>Northern and North-West</i>	<i>Far North</i>
	<i>No.</i>	<i>No.</i>	<i>No.</i>	<i>No.</i>	<i>No.</i>	<i>No.</i>	<i>No.</i>
200	160	170	180	180	180	170	190
300	200	220	230	220	220	210	240
500	270	280	300	290	290	270	310
700	320	340	350	340	340	320	370
1,000	380	410	430	410	420	390	440
1,500	470	500	530	510	510	480	550
2,000	550	590	620	600	600	560	640
2,500	620	660	690	670	670	630	720
3,000	680	720	760	740	740	690	790
4,000	790	840	890	860	860	810	920
5,000	890	950	1000	960	970	910	1,050
7,000	1,050	1,150	1,200	1,150	1,150	1,100	1,250
10,000	1,300	1,350	1,450	1,400	1,400	1,300	1,500
15,000	1,600	1,700	1,750	1,700	1,700	1,600	1,850
20,000	1,850	1,950	2,050	2,000	2,000	1,900	2,150
30,000	2,300	2,400	2,550	2,450	2,500	2,350	2,650
50,000	3,000	3,150	3,350	3,250	3,250	3,050	3,450
70,000	3,550	3,800	4,000	3,850	3,850	3,650	4,100
100,000	4,300	4,550	4,800	4,650	4,650	4,350	4,950
200,000	6,200	6,600	6,900	6,700	6,700	6,300	7,100
300,000	7,600	8,100	8,500	8,300	8,300	7,800	8,800
500,000	10,000	10,600	11,200	10,800	10,800	10,200	11,500

## TECHNICAL NOTES — continued

## Linear interpolation

12. Linear interpolation is used to determine the standard error of an estimate which falls between two values listed in the *size of estimate* column in Tables A or B. Linear interpolation is best described using an example. In February 1994 there were 586,400 ( $X_e$ ) employed females in Queensland. This estimate falls between the values 500,000 ( $X_1$ ) and 1,000,000 ( $X_u$ ) in Table A.

13. The standard error of the estimate is determined as follows:

$$\begin{aligned} \text{Firstly calculate } F &= \frac{X_e - X_1}{X_u - X_1} \\ &= \frac{586,400 - 500,000}{1,000,000 - 500,000} \\ &= 0.173 \end{aligned}$$

Secondly, calculate the standard error of the estimate,  $SE(X_e)$  thus,

$$\begin{aligned} SE(X_e) &= SE(X_1) + F[SE(X_u) - SE(X_1)] \\ &= 7,000 + 0.173 \times [8,900 - 7,000] \\ &= 7,329 \\ &= 7,300 \text{ rounding to the nearest 100.} \end{aligned}$$

Therefore the standard error of the number of employed females in Queensland in February 1994 (586,400) is 7,300.

TABLE B — STANDARD ERRORS OF MONTHLY MOVEMENTS FOR STATISTICAL REGIONS AND QUEENSLAND

Size of estimate	Brisbane (MSR) Statistical Regions					
	Queensland; Brisbane (MSR); Balance of Queensland		Brisbane City Inner Ring	Brisbane City Outer Ring	South and East Brisbane Statistical Division Balance	North and West Brisbane Statistical Division Balance
	No.	%	No.	No.	No.	No.
1,000	580	58.0	330	310	250	320
1,500	660	44.0	400	370	300	380
2,000	730	36.5	450	420	340	440
2,500	790	31.6	500	470	370	480
3,000	840	28.0	540	510	400	520
4,000	930	23.3	610	570	460	590
5,000	1,000	20.0	670	630	500	650
7,000	1,150	16.4	770	730	580	750
10,000	1,250	12.5	900	850	680	880
15,000	1,450	9.7	1,100	1,000	810	1,050
20,000	1,600	8.0	1,200	1,150	920	1,200
30,000	1,850	6.2	1,450	1,350	1,100	1,400
50,000	2,200	4.4	1,800	1,700	1,350	1,750
100,000	2,800	2.8	2,450	2,300	1,850	2,400
200,000	3,550	1.8	3,300	3,150	2,500	3,200
300,000	4,100	1.4	3,950	3,750	2,950	3,850

Size of estimate	Balance of Queensland Statistical Regions						
	South and East Moreton	North and West Moreton	Wide Bay-Burnett	Darling Downs and South-West	Mackay, Fitzroy and Central-West	Northern and North-West	Far North
	No.	No.	No.	No.	No.	No.	No.
1,000	290	300	340	320	340	320	290
1,500	340	350	400	390	410	390	340
2,000	390	400	460	440	460	440	390
2,500	430	440	500	480	510	480	430
3,000	460	480	550	520	550	520	460
4,000	530	540	620	590	620	590	530
5,000	580	600	680	650	680	650	580
7,000	670	690	790	760	790	750	670
10,000	780	810	920	880	920	880	780
15,000	930	960	1,100	1,050	1,100	1,050	930
20,000	1,050	1,100	1,250	1,200	1,250	1,200	1,050
30,000	1,250	1,300	1,500	1,400	1,500	1,400	1,250
50,000	1,550	1,600	1,850	1,750	1,850	1,750	1,550
100,000	2,100	2,200	2,500	2,400	2,500	2,400	2,150
200,000	2,850	2,950	3,350	3,250	3,400	3,200	2,850
300,000	3,400	3,550	4,000	3,850	4,050	3,850	3,450



## GLOSSARY

*Attending school.* Persons aged 15 to 19 years who, during the reference week, were enrolled full-time at secondary or high schools.

*Attending tertiary educational institution full-time.* Persons aged 15 to 24 years who, during the reference week, were enrolled full-time at a TAFE college, university or other educational institution.

*Average hours worked.* Aggregate hours worked by a group divided by the number of persons in that group.

*Average duration of unemployment.* For a group of unemployed persons, the aggregate duration of unemployment divided by the number of persons in the group.

*Duration of unemployment.* The period from the time a person began looking for work or was stood down, to the end of the reference week. Thus the survey measures current (and continuing) periods of unemployment rather than completed spells. For persons who may have begun looking for work while still employed, the duration of unemployment is defined as the period from the time the person last worked full-time for 2 weeks or more to the end of the reference week.

*Employed.* Persons aged 15 years and over who, during the reference week:

- (a) worked for 1 hour or more for pay, profit, commission or payment in kind in a job or business or on a farm (comprising employees, employers and own account workers);
- (b) worked for 1 hour or more without pay in a family business or on a farm (i.e. contributing family workers);
- (c) were employees who had a job but were not at work and were: on paid leave; on leave without pay for less than 4 weeks up to the end of the reference week; stood down without pay because of bad weather or plant breakdown at their place of employment for less than 4 weeks up to the end of the reference week; on strike or locked out; on workers' compensation and expected to be returning to their job; receiving wages or salary while undertaking full-time study or
- (d) were employers, own account workers or contributing family workers who had a job, business or farm, but were not at work.

*Former workers.* Unemployed persons who have previously worked full-time for 2 weeks or more but not in the past 2 years.

*Full-time workers.* Employed persons who usually worked 35 hours or more a week (in all jobs) and others who, although usually working less than 35 hours a week, worked 35 hours or more during the reference week.

*Hours worked.* The total number of hours a group of employed persons has actually worked during the reference week, not necessarily hours paid for.

*Job leavers.* Unemployed persons who have worked full-time for 2 weeks or more in the past 2 years and *left that job voluntarily*, that is, because of unsatisfactory work arrangements, pay or hours; the job was seasonal, temporary or a holiday job and they left that job to return to studies; their last job was running their own business and they closed down or sold that business for reasons other than financial difficulties or any other reasons.

*Job losers.* Unemployed persons who have worked full-time for 2 weeks or more in the past 2 years and *left that job involuntarily*, that is, were laid off or retrenched from that job; left that job because of their own ill-health or injury; the job was seasonal or temporary and they did not leave that job to return to studies or their last job was running their own business and the business closed down because of financial difficulties.

*Industry.* From August 1994, Labour Force Survey industry data are classified according to the Australian and New Zealand Standard Industrial Classification (ANZSIC). Like the previous Australian Standard Industrial Classification (ASIC), ANZSIC classifies businesses according to their economic activities, in a structure consisting of four levels (Division, Sub-division, Group and Class). Labour Force Survey data are coded at the group level, as was the practice under ASIC. To assist users in making comparisons with previously published data, a concordance had been developed which shows for each ASIC Group, the corresponding ANZSIC Group or Groups. The concordance also shows the estimated employment attributable to each ANZSIC Group, compared with ASIC Group data, according to establishment unit employment data on the ABS Business Register at May 1994. Historical estimates of employment by ANZSIC Group have been compiled on the basis of the concordance, and are available on request. For further information about the application of ANZSIC, see *Information Paper: Labour Force Survey: Introduction of ANZSIC for Industry Data (6259.0)* and *Australian and New Zealand Standard Industry Classification 1993 (1292.0)*.

*Labour force.* For any group, persons who were employed or unemployed, as defined.

*Labour force status.* A classification of the civilian population aged 15 years and over into employed, unemployed or not in the labour force, as defined. The definitions conform closely to the international standard definitions adopted by the International Conferences of Labour Statisticians.

*Marital status.* Persons are classified as married (husband and wife) if they are reported as being married (including de facto) and their spouse was a usual resident of the household at the time of the survey. The not married category comprises persons who have never married, or are separated, widowed or divorced, as well as those who, although reported as being married, did not have a spouse who usually lived in the household.

*Median duration of unemployment.* The duration which divides unemployed persons into two equal groups, one comprising persons whose duration of unemployment is above the median and the other, persons whose duration is below it.

## GLOSSARY - continued

*Not in the labour force.* Persons who were not in the categories employed or unemployed, as defined. They include persons who were keeping house (unpaid), retired, voluntarily inactive, permanently unable to work, persons in institutions (hospitals, jails, sanatoriums, etc.), trainee teachers, members of contemplative religious orders and persons whose only activity during the reference week was jury service or unpaid voluntary work for a charitable organisation.

*Occupation.* Classified according to the *Australian Standard Classification of Occupations, 1986* (1222.0).

*Participation rate.* For any group, the labour force expressed as a percentage of the civilian population aged 15 years and over in the same group. Participation rates for persons classified by birthplace are calculated using population estimates which exclude those in institutions. Participation rates for persons classified by school or tertiary educational institution attendance are calculated using population estimates which include those in institutions.

*Part-time workers.* Employed persons who usually worked less than 35 hours a week and who did so during the reference week.

*Seasonally adjusted series.* A time series of estimates with the estimated effects of normal seasonal variation removed. See paragraph 25 of the Explanatory Notes for more detail.

*Statistical regions.* Classified according to the *Australian Standard Geographical Classification, Edition 2.3* (1216.0).

*Status in employment.* From August 1994, the labour force survey will adopt the international classification of Status in Employment, previously referred to as Status of Worker in the survey. This change follows recommendations of the 15th International Conference of Labour Statisticians and ABS standards. For the labour force survey, the change involves no changes in definitions. The only changes are to the classification titles, as follows:

<b>Status of Worker</b>	<b>Status in Employment</b>
Wage and salary earner	Employee
Employer	Employer
Self-employed	Own account worker
Unpaid family helper	Contributing family worker

*Trend series.* A smoothed seasonally adjusted series of estimates. See paragraphs 25 and 26 of the Explanatory Notes for more detail.

*Unemployed.* Persons aged 15 years and over who were not employed during the reference week and:

- (a) had actively looked for full-time or part-time work at any time in the 4 weeks up to the end of the reference week and:
  - (i) were available for work in the reference week or would have been available except for temporary illness (i.e. lasting for less than 4 weeks to the end of the reference week);
  - (ii) were waiting to start a new job within 4 weeks from the end of the reference week and would have started in the reference week if the job had been available then
- or
- (b) were waiting to be called back to a full-time or part-time job from which they had been stood down without pay for less than 4 weeks up to the end of the reference week (including the whole of the reference week) for reasons others than bad weather or plant breakdown.

*Unemployed persons classified by industry and occupation.* Unemployed persons who had worked full-time for 2 weeks or more in the last 2 years are classified according to the industry and occupation of their most recent full-time job.

*Unemployed looking for full-time work.* Unemployed persons who actively looked for full-time work or were to resume a full-time job, from which they had been stood down.

*Unemployed looking for part-time work.* Unemployed persons who had actively looked for part-time work only or were to resume a part-time job, from which they had been stood down.

*Unemployment rate.* For any group, the number of unemployed persons expressed as a percentage of the labour force in the same group.



**The Labour Force, Queensland, November 1994**

**Catalogue No.6201.3**



**2620130011943**  
ISSN 0313-1912

**Recommended retail price: \$18.00**